

Child protection and safeguarding policy (including safer recruitment, allegations against staff and low-level concerns)

Broomwood Primary School



Approved by: **Governing Body** Date: 03/09/25

Last reviewed on: **September 2025**

Next review due by: **September 2026**

Contents

Foreword and purpose and principles	4	Pupils with special educational needs, disabilities or health issues	27
Important contacts	5	Pupils with a social worker	28
Aims and Legislation and Statutory Guidance	6	Looked-after and previously looked-after children	28
Definitions	7	Pupils who are lesbian, gay, bisexual or gender questioning	28
Types of abuse	8	Child-on-child abuse	29
Equality Statement	8	Allegations of abuse made against other pupils	30
Roles and Responsibilities	9	Procedures for dealing with allegations of child-on-child abuse	30
Reporting concerns	10	Creating a supportive environment in school and minimising the risk of child-on-child abuse	30
CPOMs categories	11	Sharing of nudes and semi-nudes ('sexting')	32
All staff responsibilities	13	Homelessness	34
DSL responsibilities	14	Sexual violence and sexual harassment between children in schools	35
Governing Board	15	Serious violence	35
Headteacher responsibilities	16	Children who are absent from education	36
Virtual school heads	17	Non-collection of children	37
Children attending AP	17	Controlling access to school premises	37
Confidentiality	17	Renting our school premises out	37
Regarding anonymity, all staff will:	18	Curriculum	38
Recognising abuse and taking action	18	Online safety and the use of mobile technology	38
If a child is suffering or likely to suffer harm, or in immediate danger	19	Artificial intelligence (AI)	39
If a child makes a disclosure to you	19	Training	40
Concerns about a child	20	Staff who have contact with pupils and families	41
Notifying parents or carers	21	Safer Recruitment:	41
Trafford Teams Together and Early help assessment	21	Concerns about a staff member, supply teacher, volunteer or contractor	43
Domestic Violence	21	Allegations that may meet the harm threshold	43
So-called 'honour-based' abuse (including FGM and forced marriage)	22	Concerns that do not meet the harm threshold	48

FGM	22	Monitoring arrangements & Links with other policies	50
If you discover that FGM has taken place or a pupil is at risk of FGM	23	Glossary	51
Forced marriage	24	Operation encompass	57
Preventing radicalisation	24	DfE flowchart on DBS checks and barred list checks	58
If you have concerns about extremism	25	Contact Details	59
If you have a concern about mental health	26		
Child criminal exploitation	26		
Child sexual exploitation	27		

Foreword by Louise Owen, Headteacher

Broomwood is committed to the safeguarding and welfare of all members of our school community. We have a 'culture of vigilance' and understand that 'it could happen here'. - Broomwood Primary School aims to create and maintain a safe learning environment where all children and adults feel safe, secure and valued and know they will be listened to and taken seriously. The Continuum of Needs and Response and the Early Help Assessment is embedded into everyday practice and procedures when responding to children's need. The children have access to appropriate curriculum opportunities, including emotional health and well-being, to support the development of the skills needed to help them stay safe and healthy, develop their self-esteem and understand the responsibilities of adult life, particularly in regard to child care and parenting skills. Access to cross-curricular activities will provide opportunities to develop self-esteem and self-motivation and to help pupils respect the rights of others, particularly those groups who may be considered a minority. Everyone who comes into contact with children and their families has a role to play in safeguarding children. We recognise the staff members at our school play a particularly important role as they are in a position to identify concerns early and provide help for children to prevent concerns from escalating. We have developed a culture of vigilance and all staff members are advised to maintain an attitude of 'it could happen here' where safeguarding is concerned. This ensures that children are protected and feel safe, and that signs and symptoms of abuse are picked up, thus the opportunity for those wishing to cause harm to children and young people is drastically reduced. When concerned about the welfare of a child, staff members must always act in the best interests of the child.

At all times we will work in partnership and endeavour to establish effective working relationships with parents, carers and colleagues from other agencies in line with Working Together to Safeguard Children and local procedures.

Purpose and principles

The purpose of this document is to ensure that all stakeholders are aware of the arrangements that Broomwood Primary, (hereinafter referred to as 'the school') have in place for safeguarding and promoting the welfare of its pupils/students. It provides guidance to help staff who may have concerns about the safety or welfare of a child, and sets out the school's position in relation to the safeguarding process.

This policy:

- has been written in line with the Department for Education (DfE) statutory guidance – Keeping children safe in education, September 2025, and any other relevant UK legislation and government guidance.
- applies at all times when the school is providing services or activities directly under the management of the school staff.
- is publicly available on the schools website, and a printed copy can be made available via the school office.
- Reflects Trafford Strategic Safeguarding Partnership Multi-agency safeguarding arrangements.

This policy is consistent with all other policies adopted by the Governors and should in particular be read in conjunction with the following policies relevant to the safety and welfare of children:

- Child on Child Abuse Policy
- Relational Belonging Policy
- Staff Code of Conduct Policy
- Computing and E-safety Policy
- ICT and acceptable use policy which includes monitoring and filtering procedures
- AI acceptable use
- Low Level Concern Policy
- Whistle blowing Policy
- Children missing/absent from Education Policy
- Managing Allegations Policy
- Information Sharing/Management Policy

Important contacts

ROLE/ORGANISATION	NAME	CONTACT DETAILS
Headteacher	Louise Owen	Contact Telephone: 01619125609 louise.owen@broomwoodprimary.co.uk
Designated safeguarding lead (DSL)	Allison McCarthy	Contact Telephone: 01619125609 broomwood.deputy@broomwoodprimary.co.uk
Deputy DSL	Louise Owen	Contact Telephone: 01619125609 louise.owen@broomwoodprimary.co.uk
Other Safeguarding Team Members	Carl Bridge Jess Cunliffe	Carl.bridge@broomwoodprimary.co.uk Broomwood.sendco@broomwodoprimary.co.uk
Local authority designated officer (LADO)	Anita Hopkins	Anita.hopkins@trafford.gov.uk
Chair of Governors	Donna Vipond	Contact Telephone: 01619125609 donna.vipond@broomwoodprimary.co.uk
Designated Teacher (Pupils who are looked after)	Allison McCarthy/Grace Conlon	Contact Telephone: 01619125609 broomwood.deputy@broomwoodprimary.co.uk Grace.conlon@broomwoodprimary.co.uk
Mental Health Leads		

ROLE/ORGANISATION	NAME	CONTACT DETAILS
Channel helpline		020 7340 7264

Aims

The school aims to ensure that:

- Appropriate action is taken in a timely manner to safeguard and promote children’s welfare
- All staff are aware of their statutory responsibilities with respect to safeguarding
- Staff are properly trained in recognising and reporting safeguarding issues

Legislation and statutory guidance

This policy is based on the Department for Education’s (DfE’s) statutory guidance [Keeping Children Safe in Education \(2025\)](#) and [Working Together to Safeguard Children \(2023\)](#), the [Maintained schools governance guide](#) and [Academy trust governance guide](#). We comply with this guidance and the arrangements agreed and published by our 3 local **safeguarding partners** (see section 3).

This policy is also based on the following legislation:

- Section 175 of the [Education Act 2002](#), which places a duty on schools and local authorities to safeguard and promote the welfare of pupils
- [The School Staffing \(England\) Regulations 2009](#), which set out what must be recorded on the single central record and the requirement for at least 1 person conducting an interview to have completed safer recruitment training
- The [Children Act 1989](#) (and [2004 amendment](#)), which provides a framework for the care and protection of children
- Section 5B(11) of the Female Genital Mutilation Act 2003, as inserted by section 74 of the [Serious Crime Act 2015](#), which places a statutory duty on teachers to report to the police where they discover that female genital mutilation (FGM) appears to have been carried out on a girl under 18
- [Statutory guidance on FGM](#), which sets out responsibilities with regards to safeguarding and supporting girls affected by FGM
- The [Rehabilitation of Offenders Act 1974](#), which outlines when people with criminal convictions can work with children
- Schedule 4 of the [Safeguarding Vulnerable Groups Act 2006](#), which defines what ‘regulated activity’ is in relation to children
- [Statutory guidance on the Prevent duty](#), which explains schools’ duties under the Counter-Terrorism and Security Act 2015 with respect to protecting people from the risk of radicalisation and extremism
- The [Human Rights Act 1998](#), which explains that being subjected to harassment, violence and/or abuse, including that of a sexual nature, may breach any or all of the rights which apply to individuals under the [European Convention on Human Rights](#) (ECHR)
- [The Equality Act 2010](#), which makes it unlawful to discriminate against people regarding particular protected characteristics (including age, disability, gender reassignment, marriage and civil partnership, race, religion or belief, sex and sexual orientation). This means our governors and headteacher should carefully consider how they are supporting their pupils with regard to these characteristics. The Act allows our school to take positive action to deal with particular disadvantages affecting a specific group of pupils (where we can show it’s proportionate). This includes a duty to make reasonable adjustments for disabled pupils. For example, it could include taking positive action to support girls where there’s evidence that they’re being disproportionately subjected to sexual violence or harassment

- [The Public Sector Equality Duty \(PSED\)](#), which explains that we must have due regard to eliminating unlawful discrimination, harassment and victimisation. The PSED helps us to focus on key issues of concern and how to improve pupil outcomes. Some pupils may be more at risk of harm from issues such as: sexual violence, homophobic, biphobic or transphobic bullying or racial discrimination
- [The Childcare \(Disqualification\) and Childcare \(Early Years Provision Free of Charge\) \(Extended Entitlement\) \(Amendment\) Regulations 2018](#) (referred to in this policy as the '2018 Childcare Disqualification Regulations') and [Childcare Act 2006](#), which set out who is disqualified from working with children
- This policy also meets the requirements relating to safeguarding and welfare in the [statutory framework for the Early Years Foundation Stage](#)

Definitions

Safeguarding and promoting the welfare of children means:

- Providing help and support to meet the needs of children as soon as problems emerge
- Protecting children from maltreatment whether that is within or outside the home, including online
- Preventing impairment of children's mental and physical health or development
- Ensuring that children grow up in circumstances consistent with the provision of safe and effective care
- Taking action to enable all children to have the best outcomes

Child protection is part of this definition and refers to activities undertaken to protect specific children who are suspected to be suffering, or likely to suffer, significant harm. This includes harm that occurs inside or outside the home, including online.

Abuse is a form of maltreatment of a child, and may involve inflicting harm or failing to act to prevent harm.

Neglect is a form of abuse and is the persistent failure to meet a child's basic physical and/or psychological needs, likely to result in the serious impairment of the child's health or development.

Sharing of nudes and semi-nudes (also known as sexting or youth-produced sexual imagery) is where children share nude or semi-nude images, videos or live streams. This also includes pseudo-images that are computer-generated images that otherwise appear to be a photograph or video.

Children includes everyone under the age of 18.

The following 3 **safeguarding partners** are identified in Keeping Children Safe in Education (and defined in the Children Act 2004, as amended by chapter 2 of the Children and Social Work Act 2017). They will make arrangements to work together to safeguard and promote the welfare of local children, including identifying and responding to their needs:

- The local authority (LA)
- Integrated care boards (previously known as clinical commissioning groups) for an area within the LA
- The chief officer of police for an area in the LA area

Victim is a widely understood and recognised term, but we understand that not everyone who has been subjected to abuse considers themselves a victim, or would want to be described that way. When managing an incident, we will be prepared to use any term that the child involved feels most comfortable with.

Alleged perpetrator(s) and **perpetrator(s)** are widely used and recognised terms. However, we will think carefully about what terminology we use (especially in front of children) as, in some cases,

abusive behaviour can be harmful to the perpetrator too. We will decide what's appropriate and which terms to use on a case-by-case basis.

Types of Abuse

Physical abuse may involve hitting, shaking, throwing, poisoning, burning or scalding, drowning, suffocating or otherwise causing physical harm to a child. Physical harm may also be caused when a parent or carer fabricates the symptoms of, or deliberately induces, illness in a child.

Emotional abuse is the persistent emotional maltreatment of a child such as to cause severe and adverse effects on the child's emotional development. Some level of emotional abuse is involved in all types of maltreatment of a child, although it may occur alone.

Emotional abuse may involve:

- Conveying to a child that they are worthless or unloved, inadequate, or valued only insofar as they meet the needs of another person
- Not giving the child opportunities to express their views, deliberately silencing them or 'making fun' of what they say or how they communicate
- Age or developmentally inappropriate expectations being imposed on children. These may include interactions that are beyond a child's developmental capability, as well as overprotection and limitation of exploration and learning, or preventing the child participating in normal social interaction
- Seeing or hearing the ill-treatment of another
- Serious bullying (including cyber-bullying), causing children frequently to feel frightened or in danger, or the exploitation or corruption of children

Sexual abuse involves forcing or enticing a child or young person to take part in sexual activities, not necessarily involving a high level of violence, whether or not the child is aware of what is happening. The activities may involve:

- Physical contact, including assault by penetration (for example, rape or oral sex) or non-penetrative acts such as masturbation, kissing, rubbing and touching outside of clothing
- Non-contact activities, such as involving children in looking at, or in the production of, sexual images, watching sexual activities, encouraging children to behave in sexually inappropriate ways, or grooming a child in preparation for abuse (including via the internet)

Sexual abuse is not solely perpetrated by adult males. Women can also commit acts of sexual abuse, as can other children.

Neglect is the persistent failure to meet a child's basic physical and/or psychological needs, likely to result in the serious impairment of the child's health or development. Neglect may occur during pregnancy as a result of maternal substance abuse.

Once a child is born, neglect may involve a parent or carer failing to:

- Provide adequate food, clothing and shelter (including exclusion from home or abandonment)
- Protect a child from physical and emotional harm or danger
- Ensure adequate supervision (including the use of inadequate care-givers)
- Ensure access to appropriate medical care or treatment

It may also include neglect of, or unresponsiveness to, a child's basic emotional needs.

Equality statement

Some children have an increased risk of abuse, both online and offline, and additional barriers can exist for some children with respect to recognising or disclosing it. We are committed to anti-

discriminatory practice and recognise children's diverse circumstances. We ensure that all children have the same protection, regardless of any barriers they may face.

We give special consideration to children who:

- Have special educational needs and disabilities (SEND) or health conditions (see section 10)
- Are young carers
- May experience discrimination due to their race, ethnicity, religion, gender identification or sexuality
- Have English as an additional language (EAL)
- Are known to be living in difficult situations – for example, temporary accommodation or where there are issues such as substance abuse or domestic violence
- Are at risk of female genital mutilation (FGM), sexual exploitation, forced marriage, or radicalisation
- Are asylum seekers
- Are at risk due to either their own or a family member's mental health needs
- Are looked after or previously looked after (see section 12)
- Are missing or absent from education for prolonged periods and/or frequently
- Whose parent/carer has expressed an intention to remove them from school to be home educated

Roles and responsibilities

Safeguarding and child protection is **everyone's** responsibility. This policy applies to all staff, volunteers and governors in the school and is consistent with the procedures of the 3 safeguarding partners. Our policy and procedures also apply to extended school and off-site activities.

The school plays a crucial role in preventative education. This is in the context of a whole-school approach to preparing pupils for life in modern Britain, and a culture of zero tolerance of sexism, misogyny/misandry, homophobia, biphobia, transphobia and sexual violence/harassment. This will be underpinned by our:

Relational Belonging Policy

- Pastoral support system

Planned programme of relationships, sex and health education (RSHE), which is inclusive and delivered regularly, tackling issues such as:

- Healthy and respectful relationships
- Boundaries and consent
- Stereotyping, prejudice and equality
- Body confidence and self-esteem
- How to recognise an abusive relationship (including coercive and controlling behaviour)
- The concepts of, and laws relating to, sexual consent, sexual exploitation, abuse, grooming, coercion, harassment, rape, domestic abuse, so-called honour-based violence such as forced marriage and FGM and how to access support
- What constitutes sexual harassment and sexual violence and why they're always unacceptable

Reporting concerns

If you ever have any concerns about a child you must report it, no matter how small it may seem. It could be the final piece in the jigsaw.

- Share your concern with a member of the safe-guarding team – Louise, Allison, Jess, Carl
- Record your concern on CPOMS and 'action' it for the member of the safeguarding team you have spoken to.
- Concerns linked to neglect can be reported at the end of the day any other concerns, especially marks, must be reported immediately as social care may want to act before the end of the day.

Reporting on CPOMS

- Log in to CPOMS
- On the front page it should say **Dashboard** and **Add Incident**. Click **Add Incident**.
- Type in the child's name and then you are ready to record your concern.

Incident ← Back

Categories

Attendance/Punctuality Behaviour FGM First Aid Health Care Plan Intimate Care LAC Mobility/Transition Parental Contact Pastoral Care Concern Pastoral Input Positive Handling Radicalisation Refugee Risk Assessments Safeguarding Concerns SEN Social Care Contact Social Care Threshold Social Media Concerns

Linked student(s)

Begin typing a student's name

Type a student's name to link them to this incident.

Maps

Date/Time

30/08/2022 20:48

- The detail of your concern should be written in the incident box
- Make sure what you write is factual, do not make assumptions.
- Write children's names and teacher names in full, NOT initials.
- It is important to say who the people are (mum, teacher, cleaner) as people outside of our organisation will not know who they are.
- Remember what you write could be used in court and so accuracy is key.

Date:

Time of the incident:

Source of the information:

Details of the concern:

Who you told:

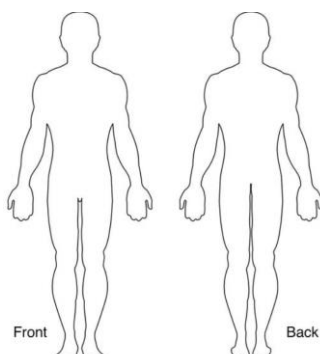
- The next step is to identify the category of concern. Start by clicking **Safeguarding Concerns** and then one of the sub categories. If you are unsure as to which category to select please speak to a member of the safe-guarding team.
- If the incident links to another pupil you can type their name into the **Linked Students** box, you do not have to write it again for each child.

Linked student(s)

Begin typing a student's name

Type a student's name to link them to this incident.

- If you are reporting a mark on a child you need to indicate this on the body map. Link on the body image and a larger one will appear. Click the position of the mark on the body and a red cross with appear.
- If your concern is around radicalisation, report it in the same way and click the Prevent tab.



- Scroll down to the **Alert Staff Members** section and click on safe-guarding team. A list of names will appear. In the column labelled **Require Action** click the box for the name of the member of staff who will be following this up. It is likely to be the person you have told, but they may tell you to action it to another member of the team who is more familiar with the family. If unsure ask.

6 staff will be alerted.

Name	Show Documents	View Actions	Require action	Delete
Allison McCarthy	<input type="checkbox"/> configured alert	<input type="checkbox"/>	<input type="checkbox"/>	
Louise Owen	<input type="checkbox"/> configured alert	<input type="checkbox"/>	<input type="checkbox"/>	
Carl Bridge	<input checked="" type="checkbox"/>	<input checked="" type="checkbox"/>	<input type="checkbox"/>	<input checked="" type="checkbox"/>
Julie Ford	<input checked="" type="checkbox"/>	<input checked="" type="checkbox"/>	<input type="checkbox"/>	<input checked="" type="checkbox"/>
Jessica Cunliffe	<input checked="" type="checkbox"/>	<input checked="" type="checkbox"/>	<input type="checkbox"/>	<input checked="" type="checkbox"/>
Sophie Ridley	<input checked="" type="checkbox"/>	<input checked="" type="checkbox"/>	<input type="checkbox"/>	<input checked="" type="checkbox"/>

Who should I alert?

Submit Incident

- Finally, click **Submit Incident**, at the bottom of the page.

Please remember that any member of staff has the right to contact First response directly if they have a concern. 0161-912-5125

You may be asked to put in a referral, if so, complete the online form with as much information as you have, don't worry if you don't have everything.

<https://trafford-framework.egovhub.net/TRAFFORDFIRSTRESPONSEREFERRALFORM/launch>

CPOMs Categories

Always speak to a member of the safeguarding team if you have a concern about the well-being of a child, no matter how small. If you question the need to report it, it means you should report it.

Staff to use the broad categories on the left when making a CPOMs entry. If you are unsure use the further categories listed or ask a member of the team.

Tag the safeguarding team when you record your concern.

When the safeguarding team read the entry, they will assign the most appropriate categories.

A member of the safeguarding team will follow up on your entry, review it and then make a decision based on their findings and take the appropriate next steps. This will either be **to close it and continue to monitor**, or, it will involve **further action**. Where possible/appropriate they will inform of you of the decision.

Access All Staff	Access Safeguarding Team Only	
	Main Category	Sub Categories
Attendance/Punctuality	*EBSNA *Child missing in education *Notification letter *Attendance improvement call *Attendance Support meeting *Notice to Improve *Penalty notice *school pick up	
Parent Contact * Referred to SMT	*Informal Complaint *Formal Complaint	*SLT meeting *SLT letter/email
Safeguarding Concern	*domestic abuse *CCE *CSE *mental health concern (pupil) *mental health concern (parent), substance misuse (pupil), substance misuse (parent) *physical injury *sexual abuse *neglect *emotional abuse *missing from home *grooming *FGM *Encompass *Police incident *Filtering and monitoring *accessing inappropriate content *weapons *Trafficking *Finance issues *Referral to Police intelligence	
	*Social care Contact	*Police referral *Health Referral *School referral *Anonymous referral *Child and family Assessment *Strategy meeting *MARAC meeting *Advice from Social Care *Social Care called us *Professionals meeting
	*Trafford Teams Together	*TTT meeting *TTT closure *escalation
	*Early Help	*Early Help meeting *Intensive Family support *Contact with social worker *Early help closure *escalation
	*Child in Need	*CIN meeting *CIN plan *Contact with social worker *CIN closure *escalation

	*Child Protection	*ICPC *RCPC *Core Group *CP plan *contact with social worker *de-escalation *escalation *PLO
	*LAC	*Interim Care order *Long Term care Order *PEP meeting *LAC review *Care Planning Meeting *Contact with social worker
Prevent	*child concern *family concern *Prevent referral	
	Child on Child Abuse	*sexualised-touching *sexualised-language *sexualised-assault *sexualised- harassment *Sexualised-sharing indecent images *Sexualised - upskirting
		*Bullying -emotional, *Bullying-online *Bullying-verbal *Bullying-physical *Bullying-Hazing
		*Discriminatory-Homophobic *Discriminatory-Transphobic *Discriminatory-Racism *Discriminatory-Sexism *Discriminatory-SEN
		*Relationships-Hazing
Pastoral Care Concern	*Advice given to staff *Referral to school based support *Referral to external support	
	SEN	*Referral *diagnosis *Outside agencies involved *EHCP

All staff

Staff who work directly with children are expected to read at least part 1 of Keeping Children Safe in Education (KCSIE).

Staff who work directly with children are also expected to read annex B of KCSIE (about specific safeguarding issues).

All staff will:

- Read and understand part 1 and annex B of the Department for Education's statutory safeguarding guidance, [Keeping Children Safe in Education](#), and review this guidance at least annually. Sign a declaration at the beginning of each academic year to say that they have reviewed the guidance

- Read and understand the what to do if you're worried low level concern, positive handling, relational belonging, Online safety, AI acceptable, staff code of conduct, staff handbook use polices and sign to say they have read and understood them
- Reinforce the importance of online safety when communicating with parents and carers. This includes making parents and carers aware of what we ask children to do online (e.g. sites they need to visit or who they'll be interacting with online)
- Provide a safe space for pupils who are LGBTQ+ to speak out and share their concerns
- If a member of staff becomes aware of a private fostering arrangement, they will notify the Designated Safeguarding Lead or their deputy as soon as possible. All known or suspected Private Fostering Arrangements will be reported to children's social care in the area where the child resides. Private Fostering is defined in the glossary.
- All staff are expected to refer to HM Government guidance 'What to do if you're worried a child is being abused – Advise for practitioners' for further help in identifying signs and symptoms of child abuse and neglect.

All staff will be aware of:

- Our systems that support safeguarding, including all key policies and the role and identity of the designated safeguarding lead (DSL) and the deputy DSL and the safeguarding response to children who go missing from education.
- The early help assessment process and their role in it, including identifying emerging problems, liaising with the DSL, and sharing information with other professionals to support early identification and assessment
- The process for making referrals to local authority children's social care and for statutory assessments that may follow a referral, including the role they might be expected to play
- What to do if they identify a safeguarding issue or a child tells them they are being abused or neglected, including specific issues such as FGM, and how to maintain an appropriate level of confidentiality while liaising with relevant professionals
- The signs of different types of abuse, neglect and exploitation, including domestic and sexual abuse (including controlling and coercive behaviour, as well as parental conflict that is frequent, intense, and unresolved), as well as specific safeguarding issues, such as child-on-child abuse, grooming, child sexual exploitation (CSE), child criminal exploitation (CCE), indicators of being at risk from or involved with serious violent crime, FGM, radicalisation and serious violence (including that linked to county lines)
- New and emerging threats, including online harm, grooming, sexual exploitation, criminal exploitation, radicalisation, and the role of technology and social media in presenting harm
- The importance of reassuring victims that they are being taken seriously and that they will be supported and kept safe
- The fact that children can be at risk of harm inside and outside of their home, at school and online
- The fact that children who are (or who are perceived to be) lesbian, gay, bisexual or gender questioning (LGBTQ+) can be targeted by other children
- That a child and their family may be experiencing multiple needs at the same time
- What to look for to identify children who need help or protection

The designated safeguarding lead and Deputy Lead (DSL)

The DSL is a member of the senior leadership team. Our DSL is Allison McCarthy, Deputy Headteacher. The Deputy DSL is the Headteacher, Louise Owen The DSL and DDSL take the lead

responsibility for child protection and wider safeguarding in the school. This includes online safety, and understanding our filtering and monitoring processes on school devices and school networks to keep pupils safe online.

During term time, the DSL and DDSL will be available during school hours for staff to discuss any safeguarding concerns. Both staff members can be contacted outside of school at any point via email, phone call or text message.

When the DSL or DDSL is absent, Jess Cunliffe (SENDCo) and Carl Bridge (Assistant Headteacher) will oversee and manage any safeguarding issues.

The DSL will be given the time, funding, training, resources and support to:

- Provide advice and support to other staff on child welfare and child protection matters
- Take part in strategy discussions and inter-agency meetings and/or support other staff to do so
- Contribute to the assessment of children
- Refer suspected cases, as appropriate, to the relevant body (local authority children's social care, Channel programme, Disclosure and Barring Service (DBS), and/or police), and support staff who make such referrals directly
- Have a good understanding of harmful sexual behaviour
- Have a good understanding of the filtering and monitoring systems and processes in place at our school

The DSL will also:

- Keep the headteacher informed of any issues
- Liaise with local authority case managers and designated officers for child protection concerns as appropriate
- Discuss the local response to sexual violence and sexual harassment with police and local authority children's social care colleagues to prepare the school's policies
- Be confident that they know what local specialist support is available to support all children involved (including victims and alleged perpetrators) in sexual violence and sexual harassment, and be confident as to how to access this support
- Be aware that children must have an 'appropriate adult' to support and help them in the case of a police investigation or search

The full responsibilities of the DSL and DDSL are set out in their job description.

The governing board

The governing board will:

- Facilitate a whole-school approach to safeguarding, ensuring that safeguarding and child protection are at the forefront of, and underpin, all relevant aspects of process and policy development
- Evaluate and approve this policy at each review, ensuring it complies with the law, and hold the headteacher to account for its implementation
- Be aware of its obligations under the Human Rights Act 1998, the Equality Act 2010 (including the Public Sector Equality Duty), and our school's local multi-agency safeguarding arrangements
- Appoint a link governor to monitor the effectiveness of this policy in conjunction with the full governing board. This is always a different person from the DSL
- Ensure all staff undergo safeguarding and child protection training, including online safety, and that such training is regularly updated and is in line with advice from the safeguarding partners

- Ensure that the school has appropriate filtering and monitoring systems in place, and review their effectiveness. This includes:
- Making sure that the leadership team and staff are aware of the provisions in place, and that they understand their expectations, roles and responsibilities around filtering and monitoring as part of safeguarding training
- Reviewing the [DfE's filtering and monitoring standards](#), and discussing with IT staff and service providers what needs to be done to support the school in meeting these standards

Make sure:

- The DSL has the appropriate status and authority to carry out their job, including additional time, funding, training, resources and support
- Online safety is a running and interrelated theme within the whole-school approach to safeguarding and related policies
- The DSL has lead authority for safeguarding, including online safety and understanding the filtering and monitoring systems and processes in place
- The school has procedures to manage any safeguarding concerns (no matter how small) or allegations that do not meet the harm threshold (low-level concerns) about staff members (including supply staff, volunteers and contractors).
- That this policy reflects that children with SEND, or certain medical or physical health conditions, can face additional barriers to any abuse or neglect being recognised
- Where another body is providing services or activities (regardless of whether or not the children who attend these services/activities are children on the school roll):
- Seek assurance that the other body has appropriate safeguarding and child protection policies/procedures in place, and inspect them if needed
- Make sure there are arrangements for the body to liaise with the school about safeguarding arrangements, where appropriate
- Make sure that safeguarding requirements are a condition of using the school premises, and that any agreement to use the premises would be terminated if the other body fails to comply

The chair of governors will act as the 'case manager' in the event that an allegation of abuse is made against the headteacher, where appropriate (see appendix).

All governors will read Keeping Children Safe in Education in its entirety.

The headteacher

The headteacher is responsible for the implementation of this policy, including:

- Ensuring that staff (including temporary staff) and volunteers:
 - Are informed of our systems that support safeguarding, including this policy, as part of their induction
 - Understand and follow the procedures included in this policy, particularly those concerning referrals of cases of suspected abuse and neglect
- Communicating this policy to parents/carers when their child joins the school and via the school website
- Ensuring that the DSL has appropriate time, funding, training and resources, and that there is always adequate cover if the DSL is absent
- Acting as the 'case manager' in the event of an allegation of abuse made against another member of staff or volunteer, where appropriate (see appendix)
- Making decisions regarding all low-level concerns, though they may wish to collaborate with the DSL on this
- Ensuring the relevant staffing ratios are met in the early years settings

- Ensuring that the appropriate number of staff have paediatric first aid training and that children are appropriately monitored during lunchtime and times of eating due to potential choking.
- Ensuring that all staff know, but particularly in early years, about the safe use of technology across the school and how staff should not use their phone to take photos, videos or use it when the children are within school.
- Making sure each child in the Early Years Foundation Stage is assigned a key person

Virtual school heads

Broomwood Primary effectively liaises with our authority virtual headteacher- Lyndsey Burrige in particular with the children that are LAC as:

- Virtual school heads (VSHs) have a non-statutory responsibility for the strategic oversight of the educational attendance, attainment and progress of pupils with a social worker.
- VSHs also have a non-statutory responsibility to promote the educational achievement of children in kinship care (children who live with a relative or close family friend).
- They should also identify and engage with key professionals, e.g. DSLs, special educational needs co-ordinators (SENCOs), social workers, mental health leads and others.

Children attending Alternative Provision (AP)

Whilst it is rare at Broomwood, there may be occasions where alternative provision is appropriate for a pupil. If this is the case, Broomwood will ensure that:

- When placing pupils in Alternative Provision (AP), we remain responsible for their safety and well being. We undertake robust quality assurance to ensure that the AP provider has appropriate safeguarding arrangements in place. We maintain ongoing contact with the provider, monitor attendance, and remain alert to any emerging concerns. These responsibilities apply regardless of the number of hours a pupil attends the AP setting
- We have daily contact with the AP provider to monitor attendance and progress

Confidentiality

The school recognises that all matters relating to child protection and safeguarding are confidential. Staff must never promise a child that they will keep a secret but will explain that information will be shared only with those who need to know in order to keep the child safe. Information will be handled and shared in line with the UK General Data Protection Regulation (UK GDPR) and the Data Protection Act 2018, ensuring that personal data is processed lawfully, fairly, and securely. The school will share safeguarding information with safeguarding partners (such as the Local Authority, Police, and Health services) where it is necessary to protect a child from harm, in accordance with statutory guidance. Decisions about sharing information will always prioritise the safety and welfare of the child, while ensuring compliance with data protection requirements.

We recognise that:

- Timely information sharing is essential to effective safeguarding
- Fears about sharing information must not be allowed to stand in the way of the need to promote the welfare, and protect the safety, of children
- The Data Protection Act (DPA) 2018 and the UK GDPR do not prevent, or limit, the sharing of information for the purposes of keeping children safe
- If staff need to share 'special category personal data', the DPA 2018 contains 'safeguarding of children and individuals at risk' as a processing condition that allows practitioners to share

information without consent if: it is not possible to gain consent; it cannot be reasonably expected that a practitioner gains consent; or if to gain consent would place a child at risk

- Staff should never promise a child that they will not tell anyone about a report of abuse, as this may not be in the child's best interests
- If a victim asks the school not to tell anyone about the sexual violence or sexual harassment:
 - There's no definitive answer, because even if a victim doesn't consent to sharing information, staff may still lawfully share it if there's another legal basis under the UK GDPR that applies
 - The DSL will have to balance the victim's wishes against their duty to protect the victim and other children
 - The DSL should consider that:
 - Parents or carers should normally be informed (unless this would put the victim at greater risk)
 - The basic safeguarding principle is: if a child is at risk of harm, is in immediate danger, or has been harmed, a referral should be made to local authority children's social care
 - Rape, assault by penetration and sexual assault are crimes. Where a report of rape, assault by penetration or sexual assault is made, this should be referred to the police. While the age of criminal responsibility is 10, if the alleged perpetrator is under 10, the starting principle of referring to the police remains

Regarding anonymity, all staff will:

- Be aware of anonymity, witness support and the criminal process in general where an allegation of sexual violence or sexual harassment is progressing through the criminal justice system
- Do all they reasonably can to protect the anonymity of any children involved in any report of sexual violence or sexual harassment – for example, carefully considering which staff should know about the report, and any support for children involved
- Consider the potential impact of social media in facilitating the spreading of rumours and exposing victims' identities
- The government's [information sharing advice for safeguarding practitioners](#) includes 7 'golden rules' for sharing information (including personal information), and will support staff who have to make decisions about sharing information
- If staff are in any doubt about sharing information, they should speak to the DSL (or deputy)

Recognising abuse and taking action

All staff are expected to be able to identify and recognise all forms of abuse, neglect and exploitation and shall be alert to the potential need for early help for a child who:

- Has a disability
- Has special educational needs (whether or not they have a statutory education health and care (EHC) plan)
- Is a young carer
- Is bereaved
- Is showing signs of being drawn into anti-social or criminal behaviour, including being affected by gangs and county lines and organised crime groups and/or serious violence, including knife crime
- Is frequently missing/goes missing from education, care or home
- Is at risk of modern slavery, trafficking, sexual and/or criminal exploitation
- Is at risk of being radicalised or exploited

- Is viewing problematic and/or inappropriate online content (for example, linked to violence), or developing inappropriate relationships online
- Is in a family circumstance presenting challenges for the child, such as drug and alcohol misuse, adult mental health issues and domestic abuse
- Is misusing drugs or alcohol
- Is suffering from mental ill health
- Has returned home to their family from care
- Is at risk of so-called 'honour'-based abuse such as female genital mutilation (FGM) or forced marriage
- Is a privately fostered child
- Has a parent or carer in custody or is affected by parental offending
- Is missing education, or persistently absent from school, or not in receipt of full-time education
- Has experienced multiple suspensions and is at risk of, or has been permanently excluded

Staff, volunteers and governors must follow the procedures set out below in the event of a safeguarding issue.

Please note – in this and subsequent sections, you should take any references to the DSL to mean 'the DSL (or deputy DSL)'.

If a child is suffering or likely to suffer harm, or in immediate danger

Make a referral to local authority children's social care and/or the police **immediately** if you believe a child is suffering or likely to suffer from harm, or is in immediate danger. **Anyone can make a referral. It may be appropriate to call the police in the first instance.**

- Call first response in most instances first to seek advice- 01619125125
- Complete an online referral to: <https://www.trafford.gov.uk/residents/children-and-families/worried-about-a-child/trafford-first-response.aspx>
- Depending on the circumstance, it may be appropriate to also call the police in conjunction with social care.

Once a referral has been made, the local authority should make a decision within 1 working day of a referral about what course of action to take and will let the person who made the referral know the outcome. The DSL or person who made the referral must follow up with the local authority if this information is not made available, and ensure outcomes are properly recorded.

If the child's situation does not seem to be improving after the referral, the DSL or person who made the referral must follow local escalation procedures to ensure their concerns have been addressed and that the child's situation improves.

- A member of the safeguarding team will challenge decisions where appropriate and if they are not happy with the decision, they will move in line with Trafford's escalation process. All emails should be recorded on CPOMs to show the 'paper trail' of conversations.

If a child makes a disclosure to you

If a child discloses a safeguarding issue to you, you should:

- Listen to and believe them. Allow them time to talk freely and do not ask leading questions
- Stay calm and do not show that you are shocked or upset
- Tell the child they have done the right thing in telling you. Do not tell them they should have told you sooner
- Explain what will happen next and that you will have to pass this information on. Do not promise to keep it a secret

- Write up your conversation as soon as possible on CPOMs in the child’s own words. Stick to the facts, and do not put your own judgement on it
- Ensure that if a child has a mark on them or it is linked with sexual abuse, a member of the safeguarding team is verbally informed immediately.

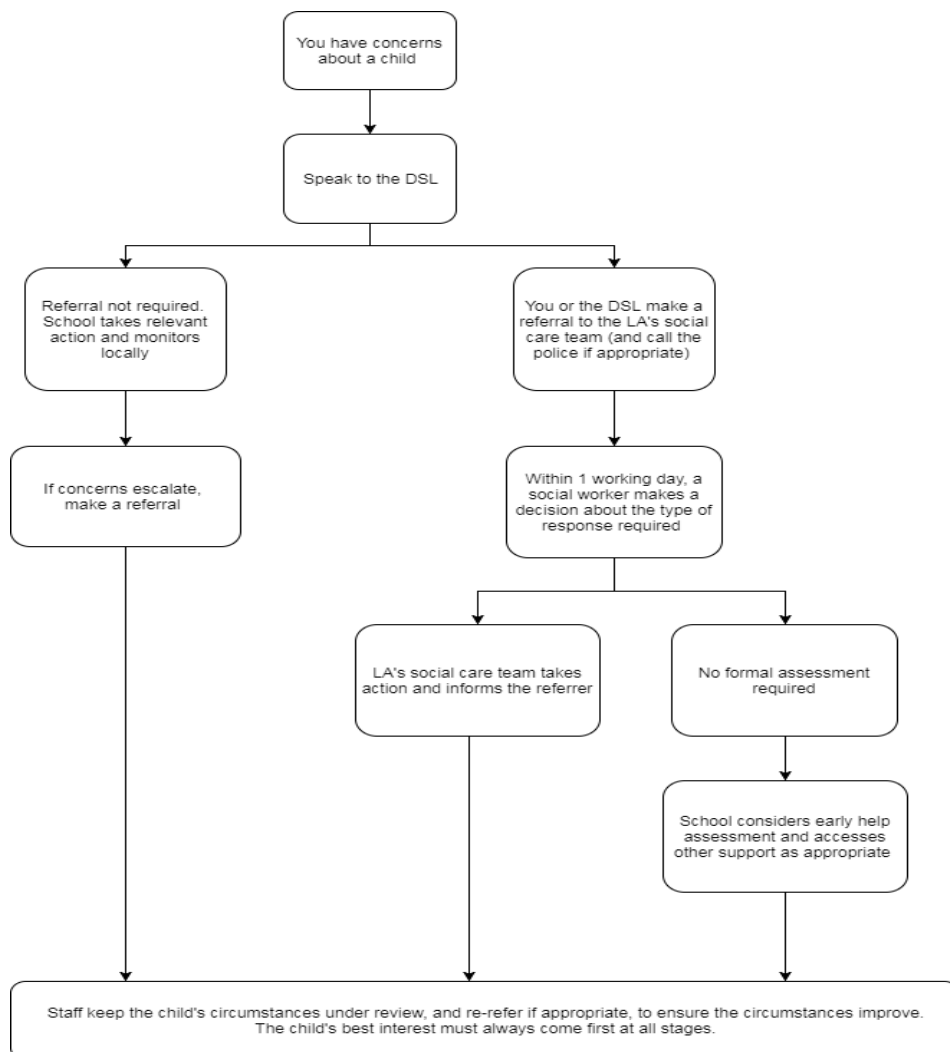
Bear in mind that some children may:

- Not feel ready, or know how to tell someone that they are being abused, exploited or neglected
- Not recognise their experiences as harmful
- Feel embarrassed, humiliated or threatened. This could be due to their vulnerability, disability, sexual orientation and/or language barriers

None of this should stop you from having a ‘professional curiosity’ and speaking to the DSL if you have concerns about a child.

Concerns about a child

- All staff must record any concerns that they have about a child on CPOMs
- Staff must feel that they can talk through any worries or concerns with a safeguarding team member
- Staff should feel that they can independently make their own referral to first response should they feel concerned about a child. At Broomwood, we would request that all concerns come through our system initially.



Notifying parents or carers

Where appropriate, we will discuss any concerns about a child with the child's parents or carers. The DSL will normally do this in the event of a suspicion or disclosure.

Other staff will only talk to parents or carers about any such concerns following consultation with the DSL.

If we believe that notifying the parents or carers would increase the risk to the child, we will discuss this with the local authority children's social care team before doing so.

In the case of allegations of abuse made against other children, we will normally notify the parents or carers of all the children involved. We will think carefully about what information we provide about the other child involved, and when. We will work with the police and/or local authority children's social care to make sure our approach to information sharing is consistent.

The DSL will, along with any relevant agencies (this will be decided on a case-by-case basis):

- Meet with the victim's parents or carers, with the victim, to discuss what's being put in place to safeguard them, and understand their wishes in terms of what support they may need and how the report will be progressed
- Meet with the alleged perpetrator's parents or carers to discuss support for them, and what's being put in place that will impact them, e.g. moving them out of classes with the victim, and the reason(s) behind any decision(s)

Trafford Teams Together and Early help assessment

Where parents ask for more support, we can make a referral to Trafford Teams Together where targeted support can be given

- If an early help assessment is appropriate, the DSL will generally lead on liaising with other agencies and setting up an inter-agency assessment as appropriate. Staff may be required to support other agencies and professionals in an early help assessment, in some cases acting as the lead practitioner.
- We will discuss and agree, with statutory safeguarding partners, levels for the different types of assessment, as part of local arrangements.
- The DSL will keep the case under constant review, and the school will consider a referral to local authority children's social care if the situation does not seem to be improving. Timelines of interventions will be monitored and reviewed.

Domestic Violence

- The school recognises children as victims of Domestic Abuse Act 2021 following the recognition in the Domestic Abuse 2021, whereby a child is a victim if they see or hear, or experience the effects of, the abuse.
- Operation Encompass is an agreement between Greater Manchester Police and schools within Trafford. This agreement facilitates the sharing of information relating to domestic incidents where children live or frequent. A flowchart explaining the process for sharing information through Operation Encompass can be found in [Appendix 1](#).
- In addition to schools receiving information on domestic abuse from Greater Manchester Police (GMP) through Operation Encompass, schools will also be invited to Trafford's Multi-Agency Risk Assessment Conference (MARAC) for any high risk identified cases. Schools are encouraged to attend MARAC for the cases which are known to them and share relevant information to multi-agency partners.

- Schools are encouraged and expected to assess risk when there is a concern and/or disclosure of domestic abuse from a pupil and/or family member. Safelives have provided guidance on how to complete a Children and Young Persons Domestic Abuse Stalking Harassment (DASH) Risk Identification Checklist (RIC). Schools are encouraged to familiarise themselves with this risk assessment and implement when appropriate. The guidance can be found in [Appendix 11](#).
- Trafford schools also have access to specialist Domestic Abuse training on DASH RIC and Managers Training through Trafford Domestic Abuse Service (TDAS). Schools are expected to attend and implement the learning from these training sessions to effectively safeguard victims of domestic abuse.

Children can witness and be adversely affected by domestic abuse and/or violence at home where it occurs between family members. In some cases, a child may blame themselves for the abuse or may have had to leave the family home as a result.

Types of domestic abuse include intimate partner violence, abuse by family members, teenage relationship abuse (abuse in intimate personal relationships between children) and child/adolescent to parent violence and abuse. It can be physical, sexual, financial, psychological or emotional. It can also include ill treatment that isn't physical, as well as witnessing the ill treatment of others. This can be particularly relevant, for example, in relation to the impact on children of all forms of domestic abuse, including where they see, hear or experience its effects.

Anyone can be a victim of domestic abuse, regardless of gender, age, ethnicity, socioeconomic status, sexuality or background, and domestic abuse can take place inside or outside of the home. Children who witness domestic abuse are also victims.

Exposure to domestic abuse and/or violence can have a serious, long-lasting emotional and psychological impact on children and affect their health, wellbeing, development and ability to learn.

If police are called to an incident of domestic abuse and any children in the household have experienced the incident, the police will inform the key adult in school (usually the designated safeguarding lead) before the child or children arrive at school the following day. This is the procedure where police forces are part of [Operation Encompass](#)

The DSL will provide support according to the child's needs and update records about their circumstances.

So-called 'honour-based' abuse (including FGM and forced marriage)

So-called 'honour-based' abuse (HBA) encompasses incidents or crimes committed to protect or defend the honour of the family and/or community, including FGM, forced marriage, and practices such as breast ironing.

Abuse committed in this context often involves a wider network of family or community pressure and can include multiple perpetrators.

All forms of HBA are abuse and will be handled and escalated as such. All staff will be alert to the possibility of a child being at risk of HBA or already having suffered it. If staff have a concern, they will speak to the DSL, who will activate local safeguarding procedures.

FGM

At Broomwood we recognise that the following are possible indicators that FGM may have taken place. This list is not exhaustive, and professional curiosity is key to finding out key information.

- A pupil confiding in a professional that FGM has taken place

- A mother/family member disclosing that FGM has been carried out
- A family/pupil already being known to social services in relation to other safeguarding issues

A girl:

- Having difficulty walking, sitting or standing, or looking uncomfortable
- Finding it hard to sit still for long periods of time (where this was not a problem previously)
- Spending longer than normal in the bathroom or toilet due to difficulties urinating
- Having frequent urinary, menstrual or stomach problems
- Avoiding physical exercise or missing PE
- Being repeatedly absent from school, or absent for a prolonged period
- Demonstrating increased emotional and psychological needs – for example, withdrawal or depression, or significant change in behaviour
- Being reluctant to undergo any medical examinations
- Asking for help, but not being explicit about the problem
- Talking about pain or discomfort between her legs

Potential signs that a pupil may be at risk of FGM include:

- The girl's family having a history of practising FGM (this is the biggest risk factor to consider)
- FGM being known to be practised in the girl's community or country of origin
- A parent or family member expressing concern that FGM may be carried out
- A family not engaging with professionals (health, education or other) or already being known to social care in relation to other safeguarding issues

A girl:

- Having a mother, older sibling or cousin who has undergone FGM
- Having limited level of integration within UK society
- Confiding to a professional that she is to have a "special procedure" or to attend a special occasion to "become a woman"
- Talking about a long holiday to her country of origin or another country where the practice is prevalent, or parents/carers stating that they or a relative will take the girl out of the country for a prolonged period
- Requesting help from a teacher or another adult because she is aware or suspects that she is at immediate risk of FGM
- Talking about FGM in conversation – for example, a girl may tell other children about it (although it is important to take into account the context of the discussion)
- Being unexpectedly absent from school
- Having sections missing from her 'red book' (child health record) and/or attending a travel clinic or equivalent for vaccinations/anti-malarial medication

If you discover that FGM has taken place or a pupil is at risk of FGM

Keeping Children Safe in Education explains that FGM comprises "all procedures involving partial or total removal of the external female genitalia, or other injury to the female genital organs".

FGM is illegal in the UK and a form of child abuse with long-lasting, harmful consequences. It is also known as 'female genital cutting' 'circumcision' or 'initiation'.

Any teacher who either:

- Is informed by a girl under 18 that an act of FGM has been carried out on her; or
- Observes physical signs which appear to show that an act of FGM has been carried out on a girl under 18 and they have no reason to believe that the act was necessary for the girl's physical or mental health or for purposes connected with labour or birth

Must immediately report this to the police, personally. This is a mandatory statutory duty, and teachers will face disciplinary sanctions for failing to meet it.

Unless they have been specifically told not to, they should also discuss the case with the DSL and involve local authority children's social care as appropriate.

Any other member of staff who discovers that an act of FGM appears to have been carried out on a **pupil under 18** must speak to the DSL and follow our local safeguarding procedures.

The duty for teachers mentioned above does not apply in cases where a pupil is at risk of FGM or FGM is suspected but is not known to have been carried out. Staff should not examine pupils.

All information should be recorded on CPOMs

Forced marriage

Forcing a person into marriage is a crime. A forced marriage is one entered into without the full and free consent of 1 or both parties and where violence, threats, or any other form of coercion is used to cause a person to enter into a marriage. Threats can be physical or emotional and psychological.

It is also illegal to cause a child under the age of 18 to marry, even if violence, threats or coercion are not involved.

Staff will receive training around forced marriage and the presenting symptoms. We are aware of the '1 chance' rule, i.e. we may only have 1 chance to speak to the potential victim and only 1 chance to save them.

If a member of staff suspects that a pupil is being forced into marriage, they will speak to the pupil about their concerns in a secure and private place. They will then report this to the DSL.

The DSL will:

- Speak to the pupil about the concerns in a secure and private place
- Activate the local safeguarding procedures and refer the case to the local authority's designated officer
- Seek advice from the Forced Marriage Unit on 020 7008 0151 or fmufco.gov.uk
- Refer the pupil to an education welfare officer, pastoral tutor, learning mentor, or school counsellor, as appropriate

Preventing radicalisation

At Broomwood we ensure that staff are aware of the Prevent strategy. The Prevent co-ordinator in Trafford is Chris Downey. The prevent lead in Broomwood is Louise Owen.

Radicalisation refers to the process of a person legitimising support for, or use of, terrorist violence

Extremism is the promotion or advancement of an ideology based on violence, hatred or intolerance, that aims to:

- Negate or destroy the fundamental rights and freedoms of others; or
- Undermine, overturn or replace the UK's system of liberal parliamentary democracy and democratic rights; or
- Intentionally create a permissive environment for others to achieve the results outlined in either of the above points

Terrorism is an action that:

- Endangers or causes serious violence to a person/people;

- Causes serious damage to property; or
- Seriously interferes or disrupts an electronic system

The use or threat of terrorism must be designed to influence the government or to intimidate the public and is made for the purpose of advancing a political, religious or ideological cause.

Schools have a duty to prevent children from becoming involved with or supporting terrorism. The DSL, or designated Prevent lead, will undertake in-depth Prevent awareness training, including on extremist and terrorist ideologies. They'll make sure that staff have access to appropriate training to equip them to identify children at risk.

We will assess the risk of children in our school from becoming involved with or supporting terrorism. This assessment will be based on an understanding of the potential risk in our local area, in collaboration with our local safeguarding partners and local police force.

We will ensure that suitable internet filtering is in place, and equip our pupils to stay safe online at school and at home.

There is no single way of identifying an individual who is likely to be susceptible to radicalisation into terrorism. Radicalisation can occur quickly or over a long period.

Staff will be alert to changes in pupils' behaviour.

The government website [Educate Against Hate](#) and the [NSPCC](#) say that signs that a pupil is being radicalised can include:

- Refusal to engage with, or becoming abusive to, peers who are different from themselves
- Becoming susceptible to conspiracy theories and feelings of persecution
- Changes in friendship groups and appearance
- Rejecting activities they used to enjoy
- Converting to a new religion
- Isolating themselves from family and friends
- Talking as if from a scripted speech
- An unwillingness or inability to discuss their views
- A sudden disrespectful attitude towards others
- Increased levels of anger
- Increased secretiveness, especially around internet use
- Expressions of sympathy for extremist ideologies and groups, or justification of their actions
- Accessing extremist material online, including on social media
- Possessing extremist literature
- Being in contact with extremist recruiters and joining, or seeking to join, extremist organisations

Children who are at risk of radicalisation may have low self-esteem, or be victims of bullying or discrimination. It is important to note that these signs can also be part of normal teenage behaviour – staff should have confidence in their instincts and seek advice if something feels wrong.

If staff are concerned about a pupil, they will follow our procedures set out in section 7.5 of this policy, including discussing their concerns with the DSL.

Staff should **always** take action if they are worried.

If you have concerns about extremism

If a child is not suffering or likely to suffer from harm, or in immediate danger, where possible speak to the DSL first to agree a course of action.

If in exceptional circumstances the DSL is not available, this should not delay appropriate action being taken. Speak to a member of the senior leadership team and/or seek advice from local authority children's social care. Make a referral to local authority children's social care directly, if appropriate (see 'Referral' above). Inform the DSL or deputy as soon as practically possible after the referral.

Where there is a concern, the DSL will consider the level of risk and decide which agency to make a referral to. This could include the police or [Channel](#), the government's programme for identifying and supporting individuals at risk of becoming involved with or supporting terrorism, or the local authority children's social care team.

The DfE also has a dedicated telephone helpline, 020 7340 7264, which school staff and governors can call to raise concerns about extremism with respect to a pupil. You can also email counter.extremism@education.gov.uk. Note that this is not for use in emergency situations.

In an emergency, call 999 or the confidential anti-terrorist hotline on 0800 789 321 if you:

- Think someone is in immediate danger
- Think someone may be planning to travel to join an extremist group
- See or hear something that may be terrorist-related

If you have a concern about mental health

Mental health problems can, in some cases, be an indicator that a child has suffered or is at risk of suffering abuse, neglect or exploitation. Follow the school's procedures of recording any type of concerns on CPOMS.

Staff will be alert to behavioural signs that suggest a child may be experiencing a mental health problem or be at risk of developing one. School, where possible, will provide appropriate pastoral support for and child or seek further professional expertise.

If you have a mental health concern that is **not** also a safeguarding concern, speak to the DSL to agree a course of action.

Child criminal exploitation

Child criminal exploitation (CCE) is a form of abuse where an individual or group takes advantage of an imbalance of power to coerce, control, manipulate or deceive a child into criminal activity. It may involve an exchange for something the victim needs or wants, and/or for the financial or other advantage of the perpetrator or facilitator, and/or through violence or the threat of violence.

The abuse can be perpetrated by males or females, and children or adults. It can be a one-off occurrence or a series of incidents over time, and range from opportunistic to complex organised abuse.

The victim can be exploited even when the activity appears to be consensual. It does not always involve physical contact and can happen online. For example, young people may be forced to work in cannabis factories, coerced into moving drugs or money across the country (county lines), forced to shoplift or pickpocket, or to threaten other young people.

Indicators of CCE can include a child:

- Appearing with unexplained gifts or new possessions
- Associating with other young people involved in exploitation
- Suffering from changes in emotional wellbeing
- Misusing drugs and alcohol
- Going missing for periods of time or regularly coming home late
- Regularly missing school or education

- Not taking part in education

If a member of staff suspects CCE, they will discuss this with the DSL. The DSL will trigger the local safeguarding procedures, including a referral to the local authority's children's social care team and the police, if appropriate.

Child sexual exploitation

Child sexual exploitation (CSE) is a form of child sexual abuse where an individual or group takes advantage of an imbalance of power to coerce, manipulate or deceive a child into sexual activity. It may involve an exchange for something the victim needs or wants and/or for the financial advantage or increased status of the perpetrator or facilitator. It may, or may not, be accompanied by violence or threats of violence.

The abuse can be perpetrated by males or females, and children or adults. It can be a one-off occurrence or a series of incidents over time, and range from opportunistic to complex organised abuse.

The victim can be exploited even when the activity appears to be consensual. Children or young people who are being sexually exploited may not understand that they are being abused. They often trust their abuser and may be tricked into believing they are in a loving, consensual relationship. CSE can include both physical contact (penetrative and non-penetrative acts) and non-contact sexual activity. It can also happen online. For example, young people may be persuaded or forced to share sexually explicit images of themselves, have sexual conversations by text, or take part in sexual activities using a webcam. CSE may also occur without the victim's immediate knowledge, for example through others copying videos or images.

In addition to the CCE indicators above, indicators of CSE can include a child:

- Having an older boyfriend or girlfriend
- Suffering from sexually transmitted infections or becoming pregnant

If a member of staff suspects CSE, they will discuss this with the DSL. The DSL will trigger the local safeguarding procedures, including a referral to the local authority's children's social care team and the police, if appropriate.

Pupils with special educational needs, disabilities or health issues

We recognise that pupils with SEND or certain health conditions can face additional safeguarding challenges. Children with disabilities are more likely to be abused than their peers. Additional barriers can exist when recognising abuse, exploitation and neglect in this group, including:

- Assumptions that indicators of possible abuse such as behaviour, mood and injury relate to the child's condition without further exploration
- Pupils being more prone to peer group isolation or bullying (including prejudice-based bullying) than other pupils
- The potential for pupils with SEN, disabilities or certain health conditions being disproportionately impacted by behaviours such as bullying, without outwardly showing any signs
- Communication barriers and difficulties in managing or reporting these challenges
- Cognitive understanding – being unable to understand the difference between fact and fiction in online content and then repeating the content/behaviours in school or being unable to understand the consequences of doing so

Any abuse involving pupils with SEND will require close liaison with the DSL (or deputy) and the SENCO.

Pupils with a social worker

Pupils may need a social worker due to safeguarding or welfare needs. We recognise that a child's experiences of adversity and trauma can leave them vulnerable to further harm as well as potentially creating barriers to attendance, learning, behaviour and mental health.

The DSL and all members of staff will work with and support social workers to help protect vulnerable children.

Where we are aware that a pupil has a social worker, the DSL will always consider this fact to ensure any decisions are made in the best interests of the pupil's safety, welfare and educational outcomes. For example, it will inform decisions about:

- Responding to unauthorised absence or missing education where there are known safeguarding risks
- The provision of pastoral and/or academic support

Looked-after and previously looked-after children

We will ensure that staff have the skills, knowledge and understanding to keep looked-after children and previously looked-after children safe. In particular, we will ensure that:

- Appropriate staff have relevant information about children's looked after legal status, contact arrangements with birth parents or those with parental responsibility, and care arrangements
- The DSL has details of children's social workers and relevant virtual school heads

We have appointed a designated teacher Grace Conlon and Allison McCarthy, who are responsible for promoting the educational achievement of looked-after children and previously looked-after children in line with [statutory guidance](#).

The designated teacher is appropriately trained and has the relevant qualifications and experience to perform the role.

As part of their role, the designated teacher will:

- Work closely with the DSL to ensure that any safeguarding concerns regarding looked-after and previously looked-after children are quickly and effectively responded to
- Work with virtual school heads to promote the educational achievement of looked-after and previously looked-after children, including discussing how pupil premium plus funding can be best used to support looked-after children and meet the needs identified in their personal education plans

Pupils who are lesbian, gay, bisexual or gender questioning

The section of KCSIE 2025 on gender questioning children remains under review, pending the publication of revised guidance.

We recognise that pupils who are (or who are perceived to be) lesbian, gay, bisexual or gender questioning (LGBTQ+) can be targeted by other children.

We also recognise that LGBTQ+ children are more likely to experience poor mental health. Any concerns should be reported to the DSL.

When families/carers are making decisions about support for gender questioning pupils, they should be encouraged to seek clinical help and advice. This should be done as early as possible when supporting pre-pubertal children.

When supporting a gender questioning pupil, we will take a cautious approach as there are still unknowns around the impact of social transition, and a pupil may have wider vulnerability, such as complex mental health and psychosocial needs, and in some cases, autism and/or attention deficit hyperactivity disorder (ADHD).

We will also consider the broad range of their individual needs, in partnership with their parents/carers (other than in rare circumstances where involving parents/carers would constitute a significant risk of harm to the pupil). We will also include any clinical advice that is available and consider how to address wider vulnerabilities such as the risk of bullying.

Risks can be compounded where children lack trusted adults with whom they can be open. We therefore aim to reduce the additional barriers faced and create a culture where pupils can speak out or share their concerns with members of staff.

Child-on-child abuse

At Broomwood, we have a relational belonging and child on child abuse policy that further explains the following information.

Child-on-child abuse is when children abuse other children. This type of abuse can take place inside and outside of school. It can also take place both face-to-face and online, and can occur simultaneously between the two.

Our school has a zero-tolerance approach to sexual violence and sexual harassment. We recognise that even if there are no reports, that doesn't mean that this kind of abuse isn't happening.

Child-on-child abuse is most likely to include, but may not be limited to:

- Bullying (including cyber-bullying, prejudice-based and discriminatory bullying)
- Abuse in intimate personal relationships between children (this is sometimes known as 'teenage relationship abuse')
- Physical abuse such as hitting, kicking, shaking, biting, hair pulling, or otherwise causing physical harm (this may include an online element which facilitates, threatens and/or encourages physical abuse)
- Sexual violence, such as rape, assault by penetration and sexual assault (this may include an online element which facilitates, threatens and/or encourages sexual violence)
- Sexual harassment, such as sexual comments, remarks, jokes and online sexual harassment, which may be standalone or part of a broader pattern of abuse
- Causing someone to engage in sexual activity without consent, such as forcing someone to strip, touch themselves sexually, or to engage in sexual activity with a third party
- Consensual and non-consensual sharing of nude and semi-nude images and/or videos (also known as sexting or youth produced sexual imagery)
- Upskirting, which typically involves taking a picture under a person's clothing without their permission, with the intention of viewing their genitals or buttocks to obtain sexual gratification, or cause the victim humiliation, distress or alarm
- Initiation/hazing type violence and rituals (this could include activities involving harassment, abuse or humiliation used as a way of initiating a person into a group and may also include an online element)

Where children abuse their peers online, this can take the form of, for example, abusive, harassing, and misogynistic messages; the non-consensual sharing of indecent images, especially around chat groups; and the sharing of abusive images and pornography, to those who don't want to receive such content.

When considering instances of harmful sexual behaviour between children, we will consider their ages and stages of development. We recognise that children displaying harmful sexual behaviour

have often experienced their own abuse and trauma, and will offer them appropriate support. Always however seek support from the safeguarding team and do not ‘brush off’ what children say.

Allegations of abuse made against other pupils

We recognise that children are capable of abusing their peers. Abuse will never be tolerated or passed off as “banter”, “just having a laugh” or “part of growing up”, as this can lead to a culture of unacceptable behaviours and an unsafe environment for pupils.

All child-on-child abuse is unacceptable and will be taken seriously.

Most cases of pupils hurting other pupils will be dealt with under our school’s behaviour policy, but this child protection and safeguarding policy will apply to any allegations that raise safeguarding concerns. This might include where the alleged behaviour:

- Is serious, and potentially a criminal offence
- Could put pupils in the school at risk
- Is violent
- Involves pupils being forced to use drugs or alcohol
- Involves sexual exploitation, sexual abuse or sexual harassment, such as indecent exposure, sexual assault, upskirting or sexually inappropriate pictures or videos (including the sharing of nudes and semi-nudes)

Procedures for dealing with allegations of child-on-child abuse

If a pupil makes an allegation of abuse against another pupil:

- You must record the allegation and tell the DSL, but do not investigate it
- The DSL will contact the local authority children’s social care team and follow its advice, as well as the police if the allegation involves a potential criminal offence
- The DSL will put a risk assessment and support plan into place for all children involved (including the victim(s), the child(ren) against whom the allegation has been made and any others affected) with a named person they can talk to if needed. This will include considering school transport as a potentially vulnerable place for a victim or alleged perpetrator(s)
- The DSL will contact the children and adolescent mental health services (CAMHS), if appropriate

If the incident is a criminal offence and there are delays in the criminal process, the DSL will work closely with the police (and other agencies as required) while protecting children and/or taking any disciplinary measures against the alleged perpetrator. We will ask the police if we have any questions about the investigation.

Creating a supportive environment in school and minimising the risk of child-on-child abuse

We recognise the importance of taking proactive action to minimise the risk of child-on-child abuse, and of creating a supportive environment where victims feel confident in reporting incidents.

To achieve this, we will:

- Challenge any form of derogatory or sexualised language or inappropriate behaviour between peers, including requesting or sending sexual images
- Be vigilant to issues that particularly affect different genders – for example, sexualised or aggressive touching or grabbing towards female pupils, and initiation or hazing-type violence with respect to boys
- Ensure our curriculum helps to educate pupils about appropriate behaviour and consent

- Ensure pupils are able to easily and confidently report abuse
- Ensure staff reassure victims that they are being taken seriously
- Be alert to reports of sexual violence and/or harassment that may point to environmental or systemic problems that could be addressed by updating policies, processes and the curriculum, or could reflect wider issues in the local area that should be shared with safeguarding partners
- Support children who have witnessed sexual violence, especially rape or assault by penetration. We will do all we can to make sure the victim, alleged perpetrator(s) and any witnesses are not bullied or harassed
- Consider intra-familial harms and any necessary support for siblings following a report of sexual violence and/or harassment

Ensure staff are trained to understand:

- How to recognise the indicators and signs of child-on-child abuse, and know how to identify it and respond to reports
- That even if there are no reports of child-on-child abuse in school, it does not mean it is not happening – staff should maintain an attitude of “it could happen here”
- That if they have any concerns about a child’s welfare, they should act on them immediately rather than wait to be told, and that victims may not always make a direct report. For example:
 - Children can show signs or act in ways they hope adults will notice and react to
 - A friend may make a report
 - A member of staff may overhear a conversation
 - A child’s behaviour might indicate that something is wrong
- That certain children may face additional barriers to telling someone because of their vulnerability, disability, gender, ethnicity and/or sexual orientation
- That a pupil harming a peer could be a sign that the child is being abused themselves, and that this would fall under the scope of this policy
- The important role they have to play in preventing child-on-child abuse and responding where they believe a child may be at risk from it
- That they should speak to the DSL if they have any concerns
- That social media is likely to play a role in the fall-out from any incident or alleged incident, including for potential contact between the victim, alleged perpetrator(s) and friends from either side

The DSL will take the lead role in any disciplining of the alleged perpetrator(s). We will provide support at the same time as taking any disciplinary action.

Disciplinary action can be taken while other investigations are going on, e.g. by the police. The fact that another body is investigating or has investigated an incident doesn’t (in itself) prevent our school from coming to its own conclusion about what happened and imposing a penalty accordingly. We will consider these matters on a case-by-case basis, taking into account whether:

- Taking action would prejudice an investigation and/or subsequent prosecution – we will liaise with the police and/or local authority children’s social care to determine this
- There are circumstances that make it unreasonable or irrational for us to reach our own view about what happened while an independent investigation is ongoing

Sharing of nudes and semi-nudes ('sexting')

Your responsibilities when responding to an incident

If you are made aware of an incident involving the consensual or non-consensual sharing of nude or semi-nude images/videos, including pseudo-images, which are computer-generated images that otherwise appear to be a photograph or video (also known as 'sexting' or 'youth produced sexual imagery'), you must report it to the DSL immediately.

You must **not**:

- View, copy, print, share, store or save the imagery yourself, or ask a pupil to share or download it (if you have already viewed the imagery by accident, you must report this to the DSL)
- Delete the imagery or ask the pupil to delete it
- Ask the pupil(s) who are involved in the incident to disclose information regarding the imagery (this is the DSL's responsibility)
- Share information about the incident with other members of staff, the pupil(s) it involves or their, or other, parents and/or carers
- Say or do anything to blame or shame any young people involved

You should explain that you need to report the incident, and reassure the pupil(s) that they will receive support and help from the DSL.

Initial review meeting

Following a report of an incident, the DSL will hold an initial review meeting with appropriate school staff – this may include the staff member who reported the incident and the safeguarding or leadership team that deals with safeguarding concerns. This meeting will consider the initial evidence and aim to determine:

- Whether there is an immediate risk to pupil(s)
- If a referral needs to be made to the police and/or children's social care
- If it is necessary to view the image(s) in order to safeguard the young person (in most cases, images or videos should not be viewed)
- What further information is required to decide on the best response
- Whether the image(s) has been shared widely and via what services and/or platforms (this may be unknown)
- Whether immediate action should be taken to delete or remove images or videos from devices or online services
- Any relevant facts about the pupils involved which would influence risk assessment
- If there is a need to contact another school, college, setting or individual
- Whether to contact parents or carers of the pupils involved (in most cases parents/carers should be involved)

The DSL will make an immediate referral to police and/or children's social care if:

- The incident involves an adult. Where an adult poses as a child to groom or exploit a child or young person, the incident may first present as a child-on-child incident. See appendix 4 for more information on assessing adult-involved incidents
- There is reason to believe that a young person has been coerced, blackmailed or groomed, or if there are concerns about their capacity to consent (for example, owing to their SEN)
- What the DSL knows about the images or videos suggests the content depicts sexual acts which are unusual for the young person's developmental stage, or are violent
- The imagery involves sexual acts and any pupil in the images or videos is under 13

- The DSL has reason to believe a pupil is at immediate risk of harm owing to the sharing of nudes and semi-nudes (for example, the young person is presenting as suicidal or self-harming)

If none of the above apply then the DSL, in consultation with the headteacher and other members of staff as appropriate, may decide to respond to the incident without involving the police or children's social care. The decision will be made and recorded in line with the procedures set out in this policy.

Further review by the DSL

If at the initial review stage a decision has been made not to refer to police and/or children's social care, the DSL will conduct a further review to establish the facts and assess the risks.

They will hold interviews with the pupils involved (if appropriate).

If at any point in the process there is a concern that a pupil has been harmed or is at risk of harm, a referral will be made to children's social care and/or the police immediately.

Informing parents/carers

The DSL will inform parents/carers at an early stage and keep them involved in the process, unless there is a good reason to believe that involving them would put the pupil at risk of harm.

Referring to the police

If it is necessary to refer an incident to the police, this will be done through dialling 101

Recording incidents

All incidents of sharing of nudes and semi-nudes, and the decisions made in responding to them, will be recorded. Assessing adult-involved nude and semi-nude sharing incidents

All adult-involved nude and semi-nude image sharing incidents are child sexual abuse offences and must immediately be referred to police/social care. However, as adult-involved incidents can present as child-on-child nude/semi-nude sharing, it may be difficult to initially assess adult involvement.

There are two types of common adult-involved incidents: sexually motivated incidents and financially motivated incidents.

Sexually motivated incidents

In this type of incident, an adult offender obtains nude and semi-nudes directly from a child or young person using online platforms.

To make initial contact, the offender may present as themselves or use a false identity on the platform, sometimes posing as a child or young person to encourage a response and build trust. The offender often grooms the child or young person on social media, in chatrooms or on gaming platforms, and may then move the conversation to a private messaging app or an end-to-end encrypted (E2EE) environment where a request for a nude or semi-nude is made. To encourage the child or young person to create and share nude or semi-nude, the offender may share pornography or child sexual abuse material (images of other young people), including AI-generated material.

Once a child or young person shares a nude or semi-nude, an offender may blackmail the child or young person into sending more images by threatening to release them online and/or send them to friends and family.

Potential signs of adult-involved grooming and coercion can include the child or young person being:

- Contacted by an online account that they do not know but appears to be another child or young person
- Quickly engaged in sexually explicit communications, which may include the offender sharing unsolicited images

- Moved from a public to a private/E2EE platform
- Coerced/pressured into doing sexual things, including creating nudes and semi-nudes
- Offered something of value such as money or gaming credits
- Threatened or blackmailed into carrying out further sexual activity. This may follow the child or young person initially sharing the image or the offender sharing a digitally manipulated image of the child or young person to extort 'real' images

Financially motivated incidents

Financially motivated sexual extortion (often known as 'sextortion') is an adult-involved incident in which an adult offender (or offenders) threatens to release nudes or semi-nudes of a child or young person unless they pay money or do something else to benefit them.

Unlike other adult-involved incidents, financially motivated sexual extortion is usually carried out by offenders working in sophisticated organised crime groups (OCGs) overseas and are only motivated by profit. Adults are usually targeted by these groups too.

Offenders will often use a false identity, sometimes posing as a child or young person, or hack another young person's account to make initial contact. To financially blackmail the child or young person, they may:

- Groom or coerce the child or young person into sending nudes or semi-nudes and financially blackmail them
- Use images that have been stolen from the child or young person taken through hacking their account
- Use digitally manipulated images, including AI-generated images, of the child or young person

The offender may demand payment or the use of the victim's bank account for the purposes of money laundering.

Potential signs of adult-involved financially motivated sexual extortion can include the child or young person being:

- Contacted by an online account that they do not know but appears to be another child or young person. They may be contacted by a hacked account of a child or young person
- Quickly engaged in sexually explicit communications which may include the offender sharing an image first
- Moved from a public to a private/E2EE platform
- Pressured into taking nudes or semi-nudes
- Told they have been hacked and they have access to their images, personal information and contacts
- Blackmailed into sending money or sharing bank account details after sharing an image or the offender sharing hacked or digitally manipulated images of the child or young person

Homelessness

Being homeless or being at risk of becoming homeless presents a real risk to a child's welfare.

The DSL and DDSL will be aware of contact details and referral routes in to the local housing authority so they can raise/progress concerns at the earliest opportunity (where appropriate and in accordance with local procedures).

Where a child has been harmed or is at risk of harm, the DSL will also make a referral to local authority children's social care.

Further information on the school's measures to prevent radicalisation are set out in our PREVENT policy

Sexual violence and sexual harassment between children in schools

Sexual violence and sexual harassment can occur:

- Between 2 children of any age and sex
- Through a group of children sexually assaulting or sexually harassing a single child or group of children
- Online and face to face (both physically and verbally)

Sexual violence and sexual harassment exist on a continuum and may overlap.

Children who are victims of sexual violence and sexual harassment will likely find the experience distressing. This will, in all likelihood, adversely affect their educational attainment and will be exacerbated if the alleged perpetrator(s) attends the same school.

If a victim reports an incident, it is essential that staff make sure they are reassured that they are being taken seriously and that they will be supported and kept safe. A victim should never be given the impression that they are creating a problem by reporting any form of abuse or neglect. Nor should a victim ever be made to feel ashamed for making a report.

When supporting victims, staff will:

- Reassure victims that the law on child-on-child abuse is there to protect them, not criminalise them
- Regularly review decisions and actions, and update policies with lessons learnt
- Look out for potential patterns of concerning, problematic or inappropriate behaviour, and decide on a course of action where we identify any patterns
- Consider if there are wider cultural issues within the school that enabled inappropriate behaviour to occur and whether revising policies and/or providing extra staff training could minimise the risk of it happening again
- Remain alert to the possible challenges of detecting signs that a child has experienced sexual violence, and show sensitivity to their needs

Some groups are potentially more at risk. Evidence shows that girls, children with SEN and/or disabilities, and lesbian, gay, bisexual or transgender (LGBT) children are at greater risk.

Staff should be aware of the importance of:

- Challenging inappropriate behaviours
- Making clear that sexual violence and sexual harassment is not acceptable, will never be tolerated and is not an inevitable part of growing up
- Challenging physical behaviours (potentially criminal in nature), such as grabbing bottoms, breasts and genitalia, pulling down trousers, flicking bras and lifting up skirts. Dismissing or tolerating such behaviours risks normalising them

If staff have any concerns about sexual violence or sexual harassment, or a child makes a report to them, they should report this to a member of the safeguarding team.

Serious violence

Indicators which may signal that a child is at risk from, or involved with, serious violent crime may include:

- Increased absence from school

- Change in friendships or relationships with older individuals or groups
- Significant decline in performance
- Signs of self-harm or a significant change in wellbeing
- Signs of assault or unexplained injuries
- Unexplained gifts or new possessions (this could indicate that the child has been approached by, or is involved with, individuals associated with criminal networks or gangs and may be at risk of criminal exploitation (see above))

Risk factors which increase the likelihood of involvement in serious violence include:

- Being male
- Having been frequently absent or permanently excluded from school
- Having experienced child maltreatment
- Having been involved in offending, such as theft or robbery

Staff will be aware of these indicators and risk factors. If a member of staff has a concern about a pupil being involved in, or at risk of, serious violence, they will report this to the DSL.

Children who are absent from education

A child being absent from education, particularly repeatedly, can be a warning sign of a range of safeguarding issues. This might include abuse or neglect, such as sexual abuse or exploitation or child criminal exploitation, or issues such as mental health problems, substance abuse, radicalisation, FGM or forced marriage.

There are many circumstances where a child may be absent or become missing from education, but some children are particularly at risk. These include children who:

- Are at risk of harm or neglect
- Are at risk of forced marriage or FGM
- Come from Gypsy, Roma, or Traveller families
- Come from the families of service personnel
- Go missing or run away from home or care
- Are supervised by the youth justice system
- Cease to attend a school
- Come from new migrant families

We will follow our procedures for unauthorised absence and for dealing with children who are absent from education, particularly on repeat occasions, to help identify the risk of abuse, exploitation and neglect, including sexual exploitation, and to help prevent the risks of going missing in future. This includes informing the local authority if a child leaves the school without a new school being named, and adhering to requirements with respect to sharing information with the local authority, when applicable, when removing a child's name from the admission register at non-standard transition points.

Staff will be trained in signs to look out for and the individual triggers to be aware of when considering the risks of potential safeguarding concerns which may be related to being absent, such as travelling to conflict zones, FGM and forced marriage.

If a staff member suspects that a child is suffering from harm or neglect, we will follow local child protection procedures, including with respect to making reasonable enquiries. We will make an immediate referral to the local authority children's social care team, and the police, if the child is suffering or likely to suffer from harm, or in immediate danger.

Our school procedures include the following:

- We always text on the day of the absence and try to call
- The second day we call again and send an email. The email explains that we will look to report the child as missing and link with social care if we don't get a response.
- We liaise with Global Policing and ask them to do a visit or staff members in school carry out a home visit.
- After 5 days, or if we haven't heard anything, we get in touch with the local authority via the dedicated portal and call them for advice.

Non-collection of children

If a child is not collected at the end of the session/day, we will:

- Call the parent or any other adult that is highlighted on the child's collection form.
- If we haven't been able to get hold of anyone by 4.00, we would send staff members round to the house.
- If we continue to have concerns, we would liaise with social care and/or the police

Controlling access to school premises

Schools can bar someone from the premises if they feel that their behaviour poses a risk to staff or pupils. It's enough for a member of staff or a pupil to feel threatened.

The school should tell an individual that they've been barred or they intend to bar them, in writing. Letters should usually be signed by the headteacher, though in some cases the local authority may wish to write instead. The individual must be allowed to present their side.

A school can either:

- bar them temporarily, until the individual has had the opportunity to formally present their side; or tell them they intend to bar them and invite them to present their side by a set deadline.
- After the individual's side has been heard, the school can decide whether to continue with barring them. The decision will be reviewed within a reasonable time, decided by the school.
- The Department for Education (DfE) does not get involved in individual cases.
- We don't knowingly allow any person on to school grounds who:
 - i. is a convicted sex offender, subject to the notification requirements of the Sexual Offences Act 2003; or
 - ii. is subject to a Risk of Sexual Harm Order, Sexual Risk Order or Child Abduction Notice.
- If you don't disclose relevant information relating to the above about yourself, and it later becomes known to us, we reserve the right to require that you leave the school site.

Renting our school premises out

Keeping our children safe in out-of-school settings where services or activities are provided separately by another body, we will seek assurance that the provider has appropriate safeguarding and child protection policies and procedures in place (including inspecting these as needed); and ensure that there are arrangements in place for the provider to liaise with the school where appropriate.

Curriculum

Throughout school, safeguarding is taught as part of our curriculum. We appreciate that whilst adults in school are working hard to keep children safe, children also play a large part in keeping themselves and their peers safe from abuse and neglect.

An age-appropriate curriculum is rolled out in school to build capacity amongst our students in their understanding of particular issues, and what actions they can take to be safe. All children have access to an appropriate curriculum, differentiated to meet their needs. This enables them to learn to develop the necessary skills to build self-esteem, respect others, defend those in need, resolve conflict without resorting to violence, question and challenge and to make informed choices in later life. Children and young people are encouraged to express and discuss their ideas, thoughts and feelings through a variety of activities and have access to a range of cultural opportunities, which promote respect and empathy for others. There is access to information and materials from diverse sources, which promote social, spiritual, moral well-being, and physical and mental health.

Online safety and the use of mobile technology

We recognise the importance of safeguarding children from potentially harmful and inappropriate online material, and we understand that technology is a significant component in many safeguarding and wellbeing issues.

To address this, our school aims to:

- Have robust processes (including filtering and monitoring systems) in place to ensure the online safety of pupils, staff, volunteers and governors
- Protect and educate the whole school community in its safe and responsible use of technology, including mobile and smart technology (which we refer to as 'mobile phones')
- Set clear guidelines for the use of mobile phones for the whole school community
- Establish clear mechanisms to identify, intervene in and escalate any incidents or concerns, where appropriate

The 4 key categories of risk

Our approach to online safety is based on addressing the following categories of risk:

- **Content** – being exposed to illegal, inappropriate or harmful content, such as pornography, racism, misogyny, self-harm, suicide, antisemitism, radicalisation, extremism, misinformation, disinformation (including fake news) and conspiracy theories
- **Contact** – being subjected to harmful online interaction with other users, such as peer-to-peer pressure, commercial advertising and adults posing as children or young adults with the intention to groom or exploit them for sexual, criminal, financial or other purposes
- **Conduct** – personal online behaviour that increases the likelihood of, or causes, harm, such as making, sending and receiving explicit images (e.g. consensual and non-consensual sharing of nudes and semi-nudes and/or pornography), sharing other explicit images and online bullying; and
- **Commerce** – risks such as online gambling, inappropriate advertising, phishing and/or financial scams

To meet our aims and address the risks above, we will:

- Educate pupils about online safety as part of our curriculum. We follow Kapow in computing and within PSHE, children have specific lessons. This is complimented through assemblies across the year.
 - The safe use of social media, the internet and technology
 - Keeping personal information private
 - How to recognise unacceptable behaviour online
 - How to report any incidents of cyber-bullying, ensuring pupils are encouraged to do so, including where they're a witness rather than a victim
-
- Train staff, as part of their induction, on safe internet use and online safeguarding issues including cyber-bullying, the risks of online radicalisation, and the expectations, roles and responsibilities around filtering and monitoring. All staff members will receive refresher training as required and at least once each academic year
 - Educate parents/carers about online safety via our website, communications sent directly to them and during parents' evenings. We will also share clear procedures with them so they know how to raise concerns about online safety
 - Make sure staff are aware of any restrictions placed on them with regards to the use of their mobile phone and cameras, for example that:
 - Staff are allowed to bring their personal phones to school for their own use, but will limit such use to non-contact time when pupils are not present
 - Staff will not take pictures or recordings of pupils on their personal phones or cameras
 - Make all pupils, parents/carers, staff, volunteers and governors aware that they are expected to sign an agreement regarding the acceptable use of the internet in school, use of the school's ICT systems and use of their mobile and smart technology
 - Explain the sanctions we will use if a pupil is in breach of our policies on the acceptable use of the internet and mobile phones
 - Make sure all staff, pupils and parents/carers are aware that staff have the power to search pupils' phones, as set out in the [DfE's guidance on searching, screening and confiscation](#)
 - Put in place robust filtering and monitoring systems to limit children's exposure to the 4 key categories of risk (described above) from the school's IT systems. Carry out an annual review of our approach to online safety, supported by an annual risk assessment that considers and reflects the risks faced by our school community
 - Provide regular safeguarding and children protection updates including online safety to all staff, at least annually, in order to continue to provide them with the relevant skills and knowledge to safeguard effectively
 - Review the safeguarding policy, including online safety, annually and ensure the procedures and implementation are updated and reviewed regularly

This section summarises our approach to online safety and mobile phone use. For full details about our school's policies in these areas, please refer to our online safety policy and mobile phone policies which can be found on our website

Artificial intelligence (AI)

Generative artificial intelligence (AI) tools are now widespread and easy to access. Staff, pupils and parents/carers may be familiar with generative chatbots such as ChatGPT and Google Gemini.

Broomwood Primary recognises that AI has many uses, including enhancing teaching and learning, and in helping to protect and safeguard pupils. However, AI may also have the potential to facilitate abuse (e.g. bullying and grooming) and/or expose pupils to harmful content. For example, in the form of 'deepfakes', where AI is used to create images, audio or video hoaxes that look real.

Broomwood Primary will treat any use of AI to access harmful content or bully pupils in line with this policy and our Relational Belonging Policy.

Staff should be aware of the risks of using AI tools while they are still being developed and should carry out risk assessments for any new AI tool being used by the school. Our school's requirements for filtering and monitoring also apply to the use of AI, in line with Keeping Children Safe in Education.

At Broomwood, we expect all of our staff to sign an AI acceptable use agreement.

Training

All staff

All staff members will undertake safeguarding and child protection training at induction, including on whistleblowing procedures and online safety, to ensure they understand the school's safeguarding systems and their responsibilities, and can identify signs of possible abuse, exploitation or neglect.

This training will be regularly updated and will:

- Be integrated, aligned and considered as part of the whole-school safeguarding approach and wider staff training, and curriculum planning
- Be in line with advice from the 3 safeguarding partners
- Include online safety, including an understanding of the expectations, roles and responsibilities for staff around filtering and monitoring
- Have regard to the Teachers' Standards to support the expectation that all teachers:
 - Manage behaviour effectively to ensure a good and safe environment
 - Have a clear understanding of the needs of all pupils

All staff will have training on the government's anti-radicalisation strategy, Prevent, to enable them to identify children at risk of becoming involved with or supporting terrorism, and to challenge extremist ideas.

Staff will also receive regular safeguarding and child protection updates, including on online safety, as required but at least annually (for example, through emails, e-bulletins and staff meetings).

Contractors who are provided through a private finance initiative (PFI) or similar contract will also receive safeguarding training.

Volunteers will receive appropriate training, if applicable.

The DSL and members of the safeguarding team

The DSL and members of the safeguarding team will undertake child protection and safeguarding training at least every 2 years.

In addition, they will update their knowledge and skills at regular intervals and at least annually (for example, through e-bulletins, meeting other DSLs, or taking time to read and digest safeguarding developments).

They, or any other designated Prevent lead, will also undertake more in-depth Prevent awareness training, including on extremist and terrorist ideologies.

Governors

All governors receive training about safeguarding and child protection (including online safety) at induction, which is regularly updated. This is to make sure that they:

- Have the knowledge and information needed to perform their functions and understand their responsibilities, such as providing strategic challenge

- Can be assured that safeguarding policies and procedures are effective and support the school to deliver a robust whole-school approach to safeguarding

As the chair of governors may be required to act as the 'case manager' in the event that an allegation of abuse is made against the headteacher, they receive training in managing allegations for this purpose.

Staff who have contact with pupils and families

All staff who have contact with children and families will have supervisions which will provide them with support, coaching and training, promote the interests of children and allow for confidential discussions of sensitive issues. Supervision is supported via an external company and all members of the safeguarding team have it on a half-termly basis.

All staff have peer group supervision on a termly basis within school and this provides further opportunities for staff to discuss their concerns and report anything that they are concerned about.

Checking the identity and suitability of visitors

All visitors will be required to verify their identity to the satisfaction of staff and to leave their belongings, including their mobile phone(s), in a safe place during their visit.

If the visitor is unknown to the setting, we will check their credentials and reason for visiting before allowing them to enter the setting. Visitors should be ready to produce identification.

Visitors are expected to sign on the inventory system and wear a visitor's badge.

Visitors to the school who are visiting for a professional purpose, such as educational psychologists and school improvement officers, will be asked to show photo ID and:

- Will be asked to show their DBS certificate, which will be checked alongside their photo ID; or
- The organisation sending the professional, such as the local authority or educational psychology service, will provide prior written confirmation that an appropriate level of DBS check has been carried out (if this is provided, we will not ask to see the DBS certificate)

All other visitors, including visiting speakers, will be accompanied by a member of staff at all times. We will not invite into the school any speaker who is known to disseminate extremist views, and will carry out appropriate checks to ensure that any individual or organisation using school facilities is not seeking to disseminate extremist views or radicalise pupils or staff.

Safer Recruitment:

Senior managers and the governing body ensure that stringent recruitment and vetting procedures are in place for staff and other adults, and that nobody commences work unless all necessary checks are complete to a satisfactory level. The same rigour is applied when appointing volunteers.

Checks undertaken include:

Enhanced Disclosure and Barring Service (DBS) Check	Barred List Check (if working regulated activity before DBS certificate is available)
Two professional references	Verify candidates physical and mental fitness for their responsibilities
Identity confirmation	Confirmation of right to work in the UK, including EU nationals
Qualification check	Confirmation of professional registration (if appropriate)
Online and social media checks	Prohibition from teaching check (only if employed as a teacher)
Overseas police checks (if appropriate) follow the right government guidance following the UK's exit from the European Union Government website	Childcare Disqualification Regulations check (schools and colleges providing childcare, reception classes of in wraparound care for children up to the age of 8 – only)

1. The School Business Manager, and overseen by the headteacher, will take responsibility for ensuring that all relevant checks are carried out and documented on the schools single central record. Supporting evidence for recruitment checks is included in the staff member's personnel file.
2. Some of our senior leaders and governors have completed safer recruitment training. At least one member of every interview panel for a position in the school (paid or voluntary) will have completed safer recruitment training. This training is refreshed when appropriate.
3. Where children are involved in the recruitment process e.g. to conduct an interview, they are briefed for this role and the need to treat information confidentially.
4. All contracts with supply agencies are specific about what checks and evidence is needed to be completed before any individual commences work at the school, and that they will be expected to present identification upon arrival.
5. More information can be found in the safer recruitment policy relating to when a barred list check would be carried out.
6. References will always be sought before confirming a person's appointment, these will be written and about previous employment, this will check that information is not contradictory or incomplete. At least one reference will be from the candidate's current employer. When a candidate is not currently employed, verification of their most recent period of employment and reasons for leaving should be obtained from the organisation where they were employed.

Recruitment – interview panels

At least 1 person conducting any interview for any post at the school will have undertaken safer recruitment training. This will cover, as a minimum, the contents of Keeping Children Safe in Education, and will be in line with local safeguarding procedures.

Concerns about a staff member, supply teacher, volunteer or contractor

If you have concerns about a member of staff (including a supply teacher, volunteer or contractor), or an allegation is made about a member of staff (including a supply teacher, volunteer or contractor) posing a risk of harm to children, speak to the headteacher as soon as possible. If the concerns/allegations are about the headteacher, speak to the chair of governors.

The headteacher/chair of governors will then follow the procedures set out below. Where you believe there is a conflict of interest in reporting a concern or allegation about a member of staff (including a supply teacher, volunteer or contractor) to the headteacher, report it directly to the local authority designated officer (LADO).

If you receive an allegation relating to an incident where an individual or organisation was using the school premises for running an activity for children, follow our school safeguarding policies and procedures, informing the LADO, as you would with any safeguarding allegation. Where appropriate, the school will inform Ofsted of the allegation and actions taken, within the necessary timescale.

Allegations that may meet the harm threshold

This section applies to all cases in which it is alleged that a current member of staff, including a supply teacher, volunteer or contractor, has:

- Behaved in a way that has harmed a child, or may have harmed a child, and/or
- Possibly committed a criminal offence against or related to a child, and/or
- Behaved towards a child or children in a way that indicates they may pose a risk of harm to children, and/or
- Behaved or may have behaved in a way that indicates they may not be suitable to work with children – this includes behaviour taking place both inside and outside of school

If we're in any doubt as to whether a concern meets the harm threshold, we will consult our local authority designated officer (LADO).

We will deal with any allegation of abuse quickly, in a fair and consistent way that provides effective child protection while also supporting the individual who is the subject of the allegation.

A 'case manager' will lead any investigation. This will be the headteacher, or the chair of governors where the headteacher is the subject of the allegation. The case manager will be identified at the earliest opportunity.

Our procedures for dealing with allegations will be applied with common sense and judgement.

If we receive an allegation of an incident happening while an individual or organisation was using the school premises to run activities for children, we will follow our safeguarding policies and procedures and inform our LADO.

Suspension of the accused until the case is resolved

Suspension of the accused will not be the default position and will only be considered in cases where there is reason to suspect that a child or other children is/are at risk of harm, or the case is so serious that there might be grounds for dismissal. In such cases, we will only suspend an individual if we have considered all other options available and there is no reasonable alternative.

Based on an assessment of risk, we will consider alternatives such as:

- Redeployment within the school so that the individual does not have direct contact with the child or children concerned

- Providing an assistant to be present when the individual has contact with children
- Redeploying the individual to alternative work in the school so that they do not have unsupervised access to children
- Moving the child or children to classes where they will not come into contact with the individual, making it clear that this is not a punishment and parents/carers have been consulted

If in doubt, the case manager will seek views from the school's personnel adviser and the designated officer at the local authority, as well as the police and local authority children's social care where they have been involved.

Definitions for outcomes of allegation investigations

- **Substantiated:** there is sufficient evidence to prove the allegation
- **Malicious:** there is sufficient evidence to disprove the allegation and there has been a deliberate act to deceive, or to cause harm to the subject of the allegation
- **False:** there is sufficient evidence to disprove the allegation
- **Unsubstantiated:** there is insufficient evidence to either prove or disprove the allegation (this does not imply guilt or innocence)
- **Unfounded:** to reflect cases where there is no evidence or proper basis that supports the allegation being made

Procedure for dealing with allegations

In the event of an allegation that meets the criteria above, the case manager will take the following steps:

- Conduct basic enquiries in line with local procedures to establish the facts to help determine whether there is any foundation to the allegation before carrying on with the steps below
- Discuss the allegation with the designated officer at the local authority. This is to consider the nature, content and context of the allegation and agree a course of action, including whether further enquiries are necessary to enable a decision on how to proceed, and whether it is necessary to involve the police and/or local authority children's social care services. (The case manager may, on occasion, consider it necessary to involve the police before consulting the designated officer – for example, if the accused individual is deemed to be an immediate risk to children or there is evidence of a possible criminal offence. In such cases, the case manager will notify the designated officer as soon as practicably possible after contacting the police)
- Inform the accused individual of the concerns or allegations and likely course of action as soon as possible after speaking to the designated officer (and the police or local authority children's social care services, where necessary). Where the police and/or local authority children's social care services are involved, the case manager will only share such information with the individual as has been agreed with those agencies
- Where appropriate (in the circumstances described above), carefully consider whether suspension of the individual from contact with children at the school is justified or whether alternative arrangements such as those outlined above can be put in place. Advice will be sought from the designated officer, police and/or local authority children's social care services, as appropriate
- Where the case manager is concerned about the welfare of other children in the community or the individual's family, they will discuss these concerns with the DSL and make a risk assessment of the situation. If necessary, the DSL may make a referral to local authority children's social care
- **If immediate suspension is considered necessary**, agree and record the rationale for this with the designated officer. The record will include information about the alternatives to suspension that have been considered, and why they were rejected. Written confirmation of the

suspension will be provided to the individual facing the allegation or concern within 1 working day, and the individual will be given a named contact at the school and their contact details

- **If it is decided that no further action is to be taken** in regard to the subject of the allegation or concern, record this decision and the justification for it and agree with the designated officer what information should be put in writing to the individual and by whom, as well as what action should follow both in respect of the individual and those who made the initial allegation
- **If it is decided that further action is needed**, take steps as agreed with the designated officer to initiate the appropriate action in school and/or liaise with the police and/or local authority children's social care services as appropriate
- Provide effective support for the individual facing the allegation or concern, including appointing a named representative to keep them informed of the progress of the case and considering what other support is appropriate. The individual will be supported to liaise with their union representative and they will be allocated a member of SMT for support.
- Inform the parents or carers of the child/children involved about the allegation as soon as possible if they do not already know (following agreement with local authority children's social care services and/or the police, if applicable). The case manager will also inform the parents or carers of the requirement to maintain confidentiality about any allegations made against teachers (where this applies) while investigations are ongoing. Any parent or carer who wishes to have the confidentiality restrictions removed in respect of a teacher will be advised to seek legal advice
- Keep the parents or carers of the child/children involved informed of the progress of the case (only in relation to their child – no information will be shared regarding the staff member)
- Make a referral to the DBS where it is thought that the individual facing the allegation or concern has engaged in conduct that harmed or is likely to harm a child, or if the individual otherwise poses a risk of harm to a child

Linked with our Early Years, we will inform Ofsted of any allegations of serious harm or abuse by any person living, working, or looking after children at the premises (whether the allegations relate to harm or abuse committed on the premises or elsewhere), and any action taken in respect of the allegations. This notification will be made as soon as reasonably possible and always within 14 days of the allegations being made.

If the school is made aware that the secretary of state has made an interim prohibition order in respect of an individual, we will immediately suspend that individual from teaching, pending the findings of the investigation by the Teaching Regulation Agency.

Where the police are involved, wherever possible the school will ask the police at the start of the investigation to obtain consent from the individuals involved to share their statements and evidence for use in the school's disciplinary process, should this be required at a later point.

Additional considerations for supply teachers and all contracted staff

If there are concerns or an allegation is made against someone not directly employed by the school, such as a supply teacher or contracted staff member provided by an agency, we will take the actions below in addition to our standard procedures.

- We will not decide to stop using an individual due to safeguarding concerns without finding out the facts and liaising with our LADO to determine a suitable outcome
- The governing board will discuss with the agency whether it is appropriate to suspend the individual, or redeploy them to another part of the school, while the school carries out the investigation
- We will involve the agency fully, but the school will take the lead in collecting the necessary information and providing it to the LADO as required

- We will address issues such as information sharing, to ensure any previous concerns or allegations known to the agency are taken into account (we will do this, for example, as part of the allegations management meeting or by liaising directly with the agency where necessary)

When using an agency, we will inform them of our process for managing allegations, and keep them updated about our policies as necessary, and will invite the agency's HR manager or equivalent to meetings as appropriate.

Timescales

We will deal with all allegations as quickly and effectively as possible and will endeavour to comply with the following timescales, where reasonably practicable:

- Any cases where it is clear immediately that the allegation is unsubstantiated or malicious should be resolved within 1 week
- If the nature of an allegation does not require formal disciplinary action, appropriate action should be taken within 3 working days
- If a disciplinary hearing is required and can be held without further investigation, this should be held within 15 working days

However, these are objectives only and where they are not met, we will endeavour to take the required action as soon as possible thereafter.

Specific actions

Action following a criminal investigation or prosecution

The case manager will discuss with the local authority's designated officer whether any further action, including disciplinary action, is appropriate and, if so, how to proceed, taking into account information provided by the police and/or local authority children's social care services.

Conclusion of a case where the allegation is substantiated

If the allegation is substantiated and the individual is dismissed or the school ceases to use their services, or the individual resigns or otherwise ceases to provide their services, the school will make a referral to the DBS for consideration of whether inclusion on the barred lists is required.

If the individual concerned is a member of teaching staff, the school will consider whether to refer the matter to the Teaching Regulation Agency to consider prohibiting the individual from teaching.

Individuals returning to work after suspension

If it is decided on the conclusion of a case that an individual who has been suspended can return to work, the case manager will consider how best to facilitate this.

The case manager will also consider how best to manage the individual's contact with the child or children who made the allegation, if they are still attending the school.

Unsubstantiated, unfounded, false or malicious reports

If a report is:

- Determined to be unsubstantiated, unfounded, false or malicious, the DSL will consider the appropriate next steps. If they consider that the child and/or person who made the allegation is in need of help, or the allegation may have been a cry for help, a referral to local authority children's social care may be appropriate
- Shown to be deliberately invented, or malicious, the school will consider whether any disciplinary action is appropriate against the individual(s) who made it

Unsubstantiated, unfounded, false or malicious allegations

If an allegation is:

- Determined to be unsubstantiated, unfounded, false or malicious, the LADO and case manager will consider the appropriate next steps. If they consider that the child and/or person who made the allegation is in need of help, or the allegation may have been a cry for help, a referral to local authority children's social care may be appropriate
- Shown to be deliberately invented, or malicious, the school will consider whether any disciplinary action is appropriate against the individual(s) who made it

Confidentiality and information sharing

The school will make every effort to maintain confidentiality and guard against unwanted publicity while an allegation is being investigated or considered.

The case manager will take advice from the LADO, police and local authority children's social care services, as appropriate, to agree:

- Who needs to know about the allegation and what information can be shared
- How to manage speculation, leaks and gossip, including how to make parents or carers of a child/children involved aware of their obligations with respect to confidentiality
- What, if any, information can be reasonably given to the wider community to reduce speculation
- How to manage press interest if, and when, it arises

Record-keeping

The case manager will maintain clear records about any case where the allegation or concern meets the criteria above and store them on the individual's confidential personnel file for the duration of the case.

The records of any allegation that, following an investigation, is found to be malicious or false will be deleted from the individual's personnel file (unless the individual consents for the records to be retained on the file).

For all other allegations (which are not found to be malicious or false), the following information will be kept on the file of the individual concerned:

- A clear and comprehensive summary of the allegation
- Details of how the allegation was followed up and resolved
- Notes of any action taken, decisions reached and the outcome
- A declaration on whether the information will be referred to in any future reference

In these cases, the school will provide a copy to the individual, in agreement with local authority children's social care or the police as appropriate.

We will retain all records at least until the accused individual has reached normal pension age, or for 10 years from the date of the allegation if that is longer.

References

When providing employer references, we will:

- Not refer to any allegation that has been found to be false, unfounded, unsubstantiated or malicious, or any repeated allegations that have all been found to be false, unfounded, unsubstantiated or malicious
- Include substantiated allegations, provided that the information is factual and does not include opinions

Learning lessons

After any cases where the allegations are substantiated, the case manager will review the circumstances of the case with the LADO to determine whether there are any improvements that we can make to the school's procedures or practice to help prevent similar events in the future.

This will include consideration of (as applicable):

- Issues arising from the decision to suspend the member of staff
- The duration of the suspension
- Whether or not the suspension was justified
- The use of suspension when the individual is subsequently reinstated. We will consider how future investigations of a similar nature could be carried out without suspending the individual

For all other cases, the case manager will consider the facts and determine whether any improvements can be made.

Non-recent allegations

Abuse can be reported, no matter how long ago it happened.

We will report any non-recent allegations made by a child to the LADO in line with our local authority's procedures for dealing with non-recent allegations.

Where an adult makes an allegation to the school that they were abused as a child, we will advise the individual to report the allegation to the police.

Concerns that do not meet the harm threshold

This section applies to all concerns (including allegations) about members of staff, including supply teachers, volunteers and contractors, which do not meet the harm threshold set out in section 1 above.

Concerns may arise through, for example:

- Suspicion
- Complaint
- Safeguarding concern or allegation from another member of staff
- Disclosure made by a child, parent or other adult within or outside the school
- Pre-employment vetting checks

We recognise the importance of responding to and dealing with any concerns in a timely manner to safeguard the welfare of children.

Definition of low-level concerns

The term 'low-level' concern is any concern – no matter how small – that an adult working in or on behalf of the school may have acted in a way that:

- Is inconsistent with the staff code of conduct, including inappropriate conduct outside of work, **and**
- Does not meet the allegations threshold or is otherwise not considered serious enough to consider a referral to the designated officer at the local authority

Examples of such behaviour could include, but are not limited to:

- Being overly friendly with children
- Having favourites
- Taking photographs of children on their mobile phone

- Engaging with a child on a one-to-one basis in a secluded area or behind a closed door
- Humiliating pupils

Sharing low-level concerns

We recognise the importance of creating a culture of openness, trust and transparency to encourage all staff to confidentially share low-level concerns so that they can be addressed appropriately.

We will create this culture by:

- Ensuring staff are clear about what appropriate behaviour is, and are confident in distinguishing expected and appropriate behaviour from concerning, problematic or inappropriate behaviour, in themselves and others
- Empowering staff to share any low-level concerns via staff safe
- Empowering staff to self-refer
- Addressing unprofessional behaviour and supporting the individual to correct it at an early stage
- Providing a responsive, sensitive and proportionate handling of such concerns when they are raised
- Helping to identify any weakness in the school's safeguarding system

Responding to low-level concerns

If the concern is raised via a third party, the headteacher will collect evidence where necessary by speaking:

- Directly to the person who raised the concern, unless it has been raised anonymously
- To the individual involved and any witnesses

The headteacher will use the information collected to categorise the type of behaviour and determine any further action, in line with the school's low level concern policy/staff code of conduct. The headteacher will be the ultimate decision-maker in respect of all low-level concerns, though they may wish to collaborate with the DSL.

Record keeping

All low-level concerns will be recorded in writing on staff safe. In addition to details of the concern raised, records will include the context in which the concern arose, any action taken and the rationale for decisions and action taken.

Records will be:

- Kept confidential, held securely and comply with the Data Protection Act 2018 and the UK GDPR
- Reviewed so that potential patterns of concerning, problematic or inappropriate behaviour can be identified. Where a pattern of such behaviour is identified, we will decide on a course of action, either through our disciplinary procedures or, where a pattern of behaviour moves from a concern to meeting the harm threshold as described in section 1 of this appendix, we will refer it to the designated officer at the local authority
- Retained at least until the individual leaves employment at the school

Where a low-level concern relates to a supply teacher or contractor, we will notify the individual's employer, so any potential patterns of inappropriate behaviour can be identified.

References

We will not include low-level concerns in references unless:

- The concern (or group of concerns) has met the threshold for referral to the designated officer at the local authority and is found to be substantiated; and/or
- The concern (or group of concerns) relates to issues that would ordinarily be included in a reference, such as misconduct or poor performance

Record-keeping

We will hold records in line with our records retention schedule.

All safeguarding concerns, discussions, decisions made and the rationale for those decisions, must be recorded in writing. This should include instances where referrals were or were not made to another agency such as local authority children's social care or the Prevent programme, etc. If you are in any doubt about whether to record something, discuss it with the DSL.

Records will include:

- A clear and comprehensive summary of the concern
- Details of how the concern was followed up and resolved
- A note of any action taken, decisions reached and the outcome

Concerns and referrals are stored against a pupils name through CPOMs

Any non-confidential records will be readily accessible and available. Confidential information and records will be held securely and only available to those who have a right or professional need to see them.

Safeguarding records relating to individual children will be retained for a reasonable period of time after they have left the school.

If a child for whom the school has, or has had, safeguarding concerns moves to another school, the DSL will ensure that their child protection file is forwarded as soon as possible, securely, and separately from the main pupil file.

To allow the new school/college to have support in place when the child arrives, this should be within:

- **5 days** for an in-year transfer, or within
- **The first 5 days** of the start of a new term

In addition, if the concerns are significant or complex, and/or social services are involved, the DSL will speak to the DSL of the receiving school and provide information to enable them to have time to make any necessary preparations to ensure the safety of the child.

Monitoring arrangements

This policy will be reviewed **annually** by Louise Owen, the headteacher At every review, it will be approved by the full governing board.

Links with other policies

This policy links to the following policies and procedures:

- Relational Belonging
- Staff Handbook
- Staff code of conduct
- Complaints
- Health and safety
- Attendance
- Online safety
- AI

- Mobile phone use
- Equality
- Relationships and sex education
- First aid
- Curriculum
- Designated teacher for looked-after and previously looked-after children
- Privacy notices
- Whistleblowing

Glossary

Term	Meaning
A Child	A person who has not yet reached their 18 th birthday.
Abuse	A form of maltreatment of a child. Somebody may abuse or neglect a child by inflicting harm or by failing to act to prevent harm. Harm can include ill treatment that is not physical as well as the impact of witnessing ill treatment of others. This can be particularly relevant, for example, in relation to the impact on children of all forms of domestic abuse. Children may be abused in a family or in an institutional or community setting by those known to them or, more rarely, by others. Abuse can take place wholly online, or technology may be used to facilitate offline abuse. Children may be abused by an adult or adults or by another child or children.
Bullying & Cyberbullying	Behaviour that is: <ul style="list-style-type: none"> • repeated • intended to hurt someone either physically or emotionally • often aimed at certain groups, for example because of race, religion, gender or sexual orientation
Child abuse linked to faith or belief (CALFB)	Child abuse linked to faith or belief (CALFB) can happen in families when there is a concept of belief in: <ul style="list-style-type: none"> • Witchcraft and spirit possession, demons or the devil acting through children or leading them astray (traditionally seen in some Christian beliefs) • The evil eye or djinns (traditionally known in some Islamic faith contexts) and dakini (in the Hindu context) • Ritual or multi murders where the killing of children is believed to bring supernatural benefits, or the use of their body parts is believed to produce potent magical remedies • Use of belief in magic or witchcraft to create fear in children to make them more compliant when they are being trafficked for domestic slavery or sexual exploitation. This is not an exhaustive list and there will be other examples where children have been harmed when adults think that their actions have brought bad fortune.
Child on Child Abuse	Children can abuse other children (often referred to as child on child abuse) and it can take many forms. It can happen both inside and outside of school/college and online. It is important that all staff recognise the indicators and signs of child on child abuse and know how to identify it and respond to reports. This can include (but is not limited to):

Term	Meaning
	<ul style="list-style-type: none"> • bullying (including cyberbullying, prejudice-based and discriminatory bullying) • abuse in intimate personal relationships between children (sometimes known as ‘teenage relationship abuse’) • physical abuse such as hitting, kicking, shaking, biting, hair pulling, or otherwise causing physical harm (this may include an online element which facilitates, threatens and/or encourages physical abuse) • sexual violence, such as rape, assault by penetration and sexual assault; (this may include an online element which facilitates, threatens and/or encourages sexual violence) <p>sexual harassment, such as sexual comments, remarks, jokes and online sexual harassment, which may be standalone or part of a broader pattern of abuse</p> <ul style="list-style-type: none"> • causing someone to engage in sexual activity without consent, such as forcing someone to strip, touch themselves sexually, or to engage in sexual activity with a third party • consensual and non-consensual sharing of nude and semi-nude images and/or videos¹¹ (also known as sexting or youth produced sexual imagery) • upskirting, which typically involves taking a picture under a person’s clothing without their permission, with the intention of viewing their genitals or buttocks to obtain sexual gratification, or cause the victim humiliation, distress, or alarm, and • initiation/hazing type violence and rituals (this could include activities involving harassment, abuse or humiliation used as a way of initiating a person into a group and may also include an online element).
Child Protection	Activity that is undertaken to protect specific children who are suffering, or are likely to suffer, significant harm.
Child sexual exploitation	Child sexual exploitation is a form of child sexual abuse. It occurs where an individual or group takes advantage of an imbalance of power to coerce, manipulate or deceive a child or young person under the age of 18 into sexual activity (a) in exchange for something the victim needs or wants, and/or (b) for the financial advantage or increased status of the perpetrator or facilitator. The victim may have been sexually exploited even if the sexual activity appears consensual. Child sexual exploitation does not always involve physical contact; it can also occur through the use of technology.
Children with Special Educational Needs and/or disabilities	<p>SEN - a child or young person has SEN if they have a learning difficulty or disability which calls for special educational provision to be made for him or her.</p> <p>Disability - a physical or mental impairment which has a long-term and substantial adverse effect on their ability to carry out normal day-to-day activities.</p>
Contextual Safeguarding	Contextual Safeguarding is an approach to understanding, and responding to, young people’s experiences of significant harm beyond their families. It recognises that the different relationships that young people form in their neighbourhoods, schools and online can feature violence and abuse.
County Lines	County lines is a term used to describe gangs and organised criminal networks involved in exporting illegal drugs using dedicated mobile phone lines or other form of “deal line”. This activity can happen locally as well as across the UK - no specified distance of travel is required. Children and vulnerable adults are exploited to move, store and sell drugs and money. Offenders will often use coercion, intimidation, violence (including sexual violence) and weapons to ensure compliance of victims.

Term	Meaning
Criminal Exploitation	Involves young people under the age of 18 in exploitative situations, relationships or contexts, where they may be manipulated or coerced into committing crime on behalf of an individual or gang in return for gifts, these may include: friendship or peer acceptance, but also cigarettes, drugs, alcohol or even food and accommodation.
Domestic Abuse	<p>1. Domestic abuse, or domestic violence, is defined across Government as “any incident, or pattern of incidents, of controlling, coercive or threatening behaviour, violence or abuse between those aged 16 and over who are or have been intimate partners or family members, regardless of gender and sexuality.</p> <p>2. This can encompass, but is not limited to, the following types of abuse:</p> <ul style="list-style-type: none"> • Psychological • Physical • Sexual • Financial • Emotional • Harassment and Stalking • Controlling behaviour • Coercive control <ul style="list-style-type: none"> 1. Controlling behaviour is: a range of acts designed to make a person subordinate and/ or dependent by isolating them from sources of support, exploiting their resources and capacities for personal gain, depriving them of them of the means needed for independence, resistance and escape and regulating their everyday behaviour. 2. Coercive behaviour is: an act or a pattern of acts of assault, threats humiliation and intimidation or other abuse that is used to harms, punish, or frighten their victim. This includes issues of concern to black and minority ethnic (BAME) communities such as so-called ‘honour based’ violence, female genital mutilation (FGM) and forced marriage, and is clear that victims are not confined to on gender or ethnic group
Early Help	Early help means providing support as soon as a problem emerges, at any point in a child's life, from the foundation years through to the teenage years. Early help can also prevent further problems arising.
Emotional Abuse	<p>The persistent emotional maltreatment of a child such as to cause severe and adverse effects on the child’s emotional development. It may involve conveying to a child that they are worthless or unloved, inadequate, or valued only insofar as they meet the needs of another person.</p> <p>It may include not giving the child opportunities to express their views, deliberately silencing them or ‘making fun’ of what they say or how they communicate. It may feature age or developmentally inappropriate expectations being imposed on children. These may include interactions that are beyond a child’s developmental capability as well as overprotection and limitation of exploration and learning, or preventing the child participating in normal social interaction. It may involve seeing or hearing the ill-treatment of another. It may involve serious bullying (including cyberbullying), causing children frequently to feel frightened or in danger, or the exploitation or corruption of children. Some level of emotional abuse is involved in all types of maltreatment of a child, although it may occur alone.</p>
Female Genital Mutilation (FGM)	Female genital mutilation (FGM) is a procedure where the female genitals are deliberately cut, injured or changed, but where there's no medical reason for this to be done.
Gangs & Youth Violence	Defining a gang is difficult, They tend to fall into three categories; peer groups, street gangs and organised crime groups. It can be common for groups of children and young people to gather together

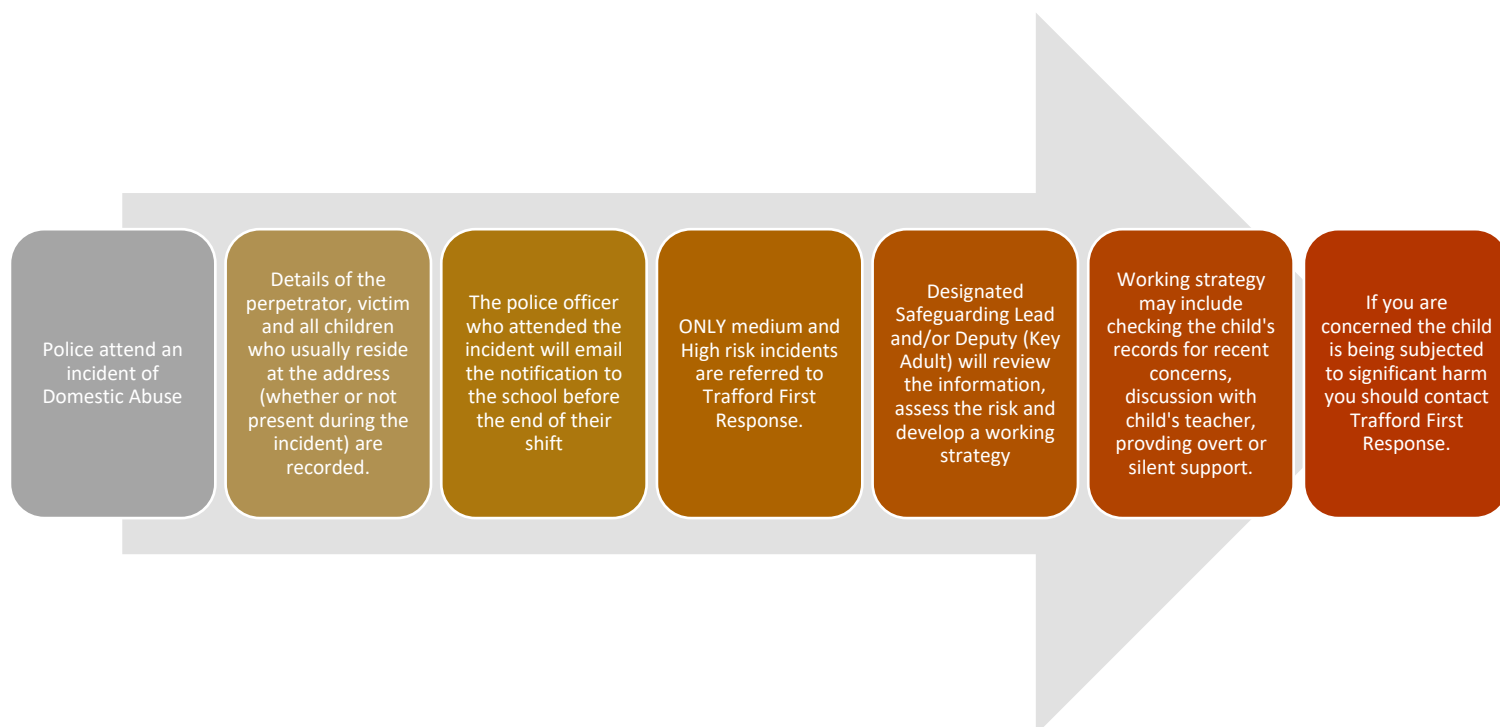
Term	Meaning
	<p>in public places to socialise, and although some peer group gatherings can lead to increased antisocial behaviour and low level youth offending, these activities should not be confused with the serious violence of a Street Gang.</p> <p>A Street Gang can be described as a relatively durable, predominantly street-based group of children who see themselves (and are seen by others) as a discernible group for whom crime and violence is integral to the group's identity.</p> <p>An organised criminal group is a group of individuals normally led by adults for whom involvement in crime is for personal gain (financial or otherwise).</p>
Hate	<p>Hostility or prejudice based on one of the following things:</p> <ul style="list-style-type: none"> • disability • race • religion • transgender identity • sexual orientation.
Honour-based violence	<p>Honour based violence is a violent crime or incident which may have been committed to protect or defend the honour of the family or community.</p>
Consensual and non-consensual sharing of nude/semi-nude images	<p>Taking, making, sharing and possessing indecent images and pseudo-photographs of people under 18 is illegal.</p> <p>A pseudo-photograph is an image made by computer-graphics or otherwise which appears to be a photograph.</p> <p>This can include:</p> <ul style="list-style-type: none"> • photos • videos • tracings and derivatives of a photograph • data that can be converted into a photograph • 'indecent' is not defined in legislation but can include penetrative and non-penetrative sexual activity • 'making' can include opening, accessing, downloading and storing online content • 'sharing' includes sending on an email, offering on a file sharing platform, uploading to a site that other people have access to, and possessing with a view to distribute
Incel	<p>Incel is a shortened version of involuntary celibate (Hall, 2019), The term involuntary celibate was seen as a person who "had not had sex for some time, despite trying". The term mansphere is used to describe a network of online communities which are male dominated and promote anti-feminist, sexist beliefs and seek to blame women for problems within society</p>

Term	Meaning
Mental Health	<p>Negative experiences and distressing life events can affect mental health in a way that can bring about changes in a young person's behaviour or emotional state, displayed in a range of different ways, all of which can be an indication of an underlying problem. This can include:</p> <ul style="list-style-type: none"> • Emotional state (fearful, withdrawn, low self-esteem) • Behaviour (aggressive or oppositional; habitual body rocking) • Interpersonal behaviours (indiscriminate contact or affection seeking, over-friendliness or excessive clinginess; demonstrating excessively 'good' behaviour to prevent disapproval; failing to seek or accept appropriate comfort or affection from an appropriate person when significantly distressed; coercive controlling behaviour; or lack of ability to understand and recognise emotions).
Modern Slavery	<p>Modern slavery encompasses human trafficking and slavery, servitude and forced or compulsory labour. Exploitation can take many forms, including: sexual exploitation, forced labour, slavery, servitude, forced criminality and the removal of organs.</p>
Neglect	<p>Neglect is the persistent failure to meet a child's basic physical and/or psychological needs, likely to result in the serious impairment of the child's health or development. Neglect may occur during pregnancy as a result of maternal substance abuse. Once a child is born, neglect may involve a parent or carer failing to:</p> <ul style="list-style-type: none"> • Protect a child from physical and emotional harm or danger. • Ensure adequate supervision (including the use of inadequate care-givers). • Ensure access to appropriate medical care or treatment. • It may also include neglect of, or unresponsiveness to, a child's basic emotional needs.
Operation Encompass	<p>Operation Encompass operates in all police forces across England. It helps police and schools work together to provide emotional and practical help to children. The system ensures that when police are called to an incident of domestic abuse, where there are children in the household who have experienced the domestic incident, the police will inform the key adult (usually the designated safeguarding lead) in school before the child or children arrive at school the following day. This ensures that the school has up to date relevant information about the child's circumstances and can enable immediate support to be put in place, according to the child's needs. Operation Encompass does not replace statutory safeguarding procedures. Where appropriate, the police and/or schools should make a referral to children's social care if they are concerned about a child's welfare. More information about the scheme and how schools can become involved is available on the Operation Encompass website</p>
Physical Abuse	<p>A form of abuse which may involve hitting, shaking, throwing, poisoning, burning or scalding, drowning, suffocating or otherwise causing physical harm to a child. Physical harm may also be caused when a parent or carer fabricates the symptoms of, or deliberately induces, illness in a child.</p>
Private Fostering	<p>A private fostering arrangement is one that is made privately (without the involvement of a local authority) for the care of a child under the age of 16 years (under 18, if disabled) by someone other than a parent or close relative, in their own home, with the intention that it should last for 28 days or more. (Close family relative is defined as a 'grandparent, brother, sister, uncle or aunt' and includes half-siblings and step-parents; it does not include great-aunts or uncles, great grandparents or cousins.)</p>

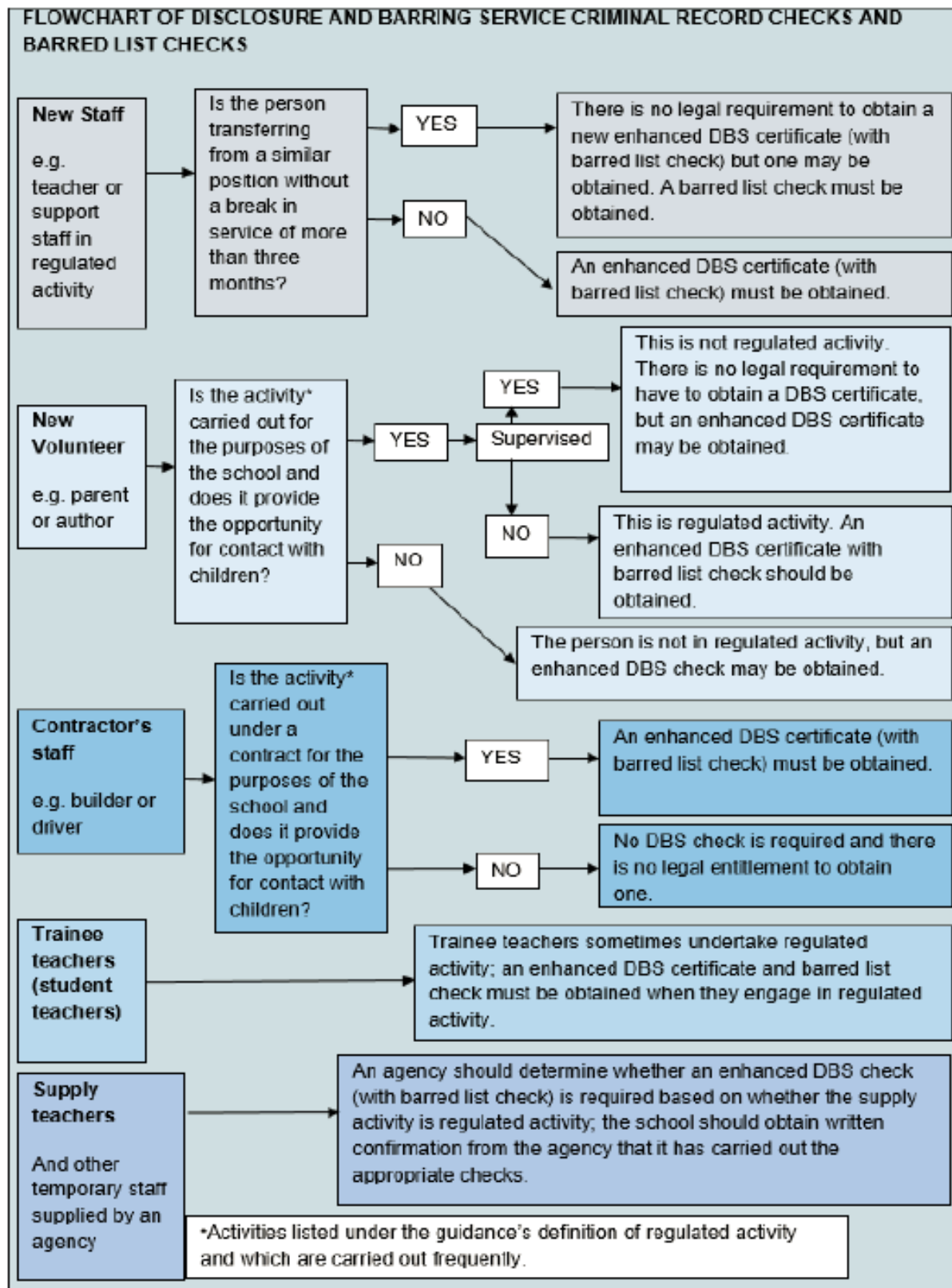
Term	Meaning
Radicalisation & Extremism	<p>Radicalisation refers to the process by which a person becoming involved with or supporting terrorism and forms of extremism leading to terrorism.</p> <p>Extremism is vocal or active opposition to fundamental British values, including democracy, the rule of law, individual liberty and mutual respect and tolerance of different faiths and beliefs. We also include in our definition of extremism calls for the death of members of our armed forces, whether in this country or overseas.</p>
Relationship Abuse	<p>Teen relationship abuse consists of the same patterns of coercive and controlling behaviour as domestic abuse. These patterns might include some or all of the following: sexual abuse, physical abuse, financial abuse, emotional abuse and psychological abuse.</p>
Safeguarding and promoting the welfare of children	<ul style="list-style-type: none"> • protecting children from maltreatment; • preventing impairment of children’s health or development; • ensuring that children grow up in circumstances consistent with the provision of safe and effective care; and • taking action to enable all children to have the best outcomes.
Serious Violence	<p>The word ‘gang’ means different things in different contexts, the government in their paper ‘Safeguarding children and young people who may be affected by gang activity’ distinguishes between peer groups, street gangs and organised criminal gangs.</p> <ul style="list-style-type: none"> • Peer group A relatively small and transient social grouping which may or may not describe themselves as a gang depending on the context. • Street gang “Groups of young people who see themselves (and are seen by others) as a discernible group for whom crime and violence is integral to the group's identity.” • Organised criminal gangs “A group of individuals for whom involvement in crime is for personal gain (financial or otherwise). For most crime is their 'occupation.’” <p>It's not illegal for a young person to be in a gang – there are different types of ‘gang’ and not every ‘gang’ is criminal or dangerous. However, gang membership can be linked to illegal activity, particularly organised criminal gangs involved in trafficking, drug dealing and violent crime.</p>
Sexual Abuse	<p>Involves forcing or enticing a child or young person to take part in sexual activities, not necessarily involving violence, whether or not the child is aware of what is happening. The activities may involve physical contact, including assault by penetration (for example rape or oral sex) or non-penetrative acts such as masturbation, kissing, rubbing, and touching outside of clothing. They may also include non-contact activities, such as involving children in looking at, or in the production of, sexual images, watching sexual activities, encouraging children to behave in sexually inappropriate ways, or grooming a child in preparation for abuse. Sexual abuse can take place online, and technology can be used to facilitate offline abuse. Sexual abuse is not solely perpetrated by adult males. Women can also commit acts of sexual abuse, as can other children. The sexual abuse of children by other children is a specific</p>

Term	Meaning
	safeguarding issue in education and all staff should be aware of it and of their school or college's policy and procedures for dealing with it.
Sexual harassment between children	When referring to sexual harassment we mean 'unwanted conduct of a sexual nature' that can occur online and offline. Sexual harassment is likely to: violate a child's dignity, and/or make them feel intimidated, degraded or humiliated and/or create a hostile, offensive or sexualised environment, and can include: sexual comments, sexual jokes or taunting, online sexual harassment or physical behaviour such as deliberately brushing against someone.
Sexual violence between children	When referring to sexual violence we are referring to sexual offences under the Sexual Offences Act 2003 ¹ . Sexual violence offences include: rape, assault by penetration and sexual assault.
Trafficking	Trafficking in persons shall mean the recruitment, transportation, transfer, harbouring or receipt of persons, by means of the threat or use of force or other forms of coercion, of abduction, of fraud, of deception, of abuse of power or of a position of vulnerability or of the giving or receiving of payments or benefits to achieve the consent of a person having control of another person, for the purpose of exploitation. Exploitation shall include, at a minimum, the exploitation of the prostitution of others or other forms of sexual exploitation, forced labour or services, slavery or practices similar to slavery, servitude or removal of organs.

Operation Encompass



DfE flowchart on DBS checks and barred list checks



Contact Details

<p>Trafford Children's First Response 0161 912 5125 FirstResponse@trafford.gov.uk</p>	<p>Local Authority Designated Officer (LADO) 0161 912 5125 FirstResponse@trafford.gov.uk LADO@trafford.gov.uk</p>
<p>Trafford Strategic Safeguarding Partnership 0161 911 8687 TSSP@trafford.gov.uk</p>	<p>Trafford Strategic Safeguarding Partnership – Training address TSSP.learning@trafford.gov.uk</p>
<p>Social Care Out of Hours Emergency Duty Team 0161 912 2020</p>	<p><u>Police</u> Non-emergency – 101 Emergency - 999</p>
<p>NW Counter-Terrorism Unit Channel Team 0161 856 6362 channel.project@gmp.police.uk</p>	<p>NSPCC Whistleblowing Helpline NSPCC website</p>
<p>Louise Owen- Headteacher 01619125609 Broomwood.admin@trafford.gov.uk</p>	<p>Allison McCarthy- Deputy Headteacher 01619125609 Broomwood.admin@trafford.gov.uk</p>